

## There Were Giants on the Earth

Compiled by Glen W. Chapman-October 2 004  
(From Various Sources)

In the Joseph Smith translation of Genesis 6:4 it says “And in those days there were Giants on the earth and they sought Noah to take away his life.”

### **From Forgotten Ages published by Dr J. R. Jochmans**

Other Giant remains, from historic rather than prehistoric times, have been brought to light on practically every continent. In 1928, workmen blasting a tunnel in the Andes Mountains for the Ecuador Central Railroad, suddenly opened an entrance to a buried cavern. Inside, the amazed workers gawked at stone coffins containing the skeletons of several eight-foot and nine-foot giants. The bones were forwarded to a university--and disappeared. About the same time, a human skeleton 17 feet tall was unearthed at Gargayan in the Philippines, and other specimens--13 feet in size--made their appearance in Ceylon. In 1960, at Tura in southwest Assam state in India--near the border or Bangladesh--a crew was digging a foundation for a new building on a college campus, when their shovels came upon a curious mound of stones less than four feet below the surface. Removing the stones, the Indians exposed the remains of an 11-foot man. Conservative scholars were quick to dismiss the skeleton as being that of a large ape—a consensus formed without even examining the bones. Those who did see the remains, however, identified them as unquestionably human. What is more, buried with the giant were charcoal bits, flints, and a metal bowl. As one witness remarked, “I’ve never known these objects to be buried with an ape.”

In 1969, construction workers excavating a site for a factory near Terracina, sixty miles from Rome, bulldozed into a pit containing a row of fifty tiled coffins. Each coffin contained a skeleton, all of which were between 6 and a half and 8 feet tall. State archaeologist Dr. Luigi Cavallucci, who analyzed the find, noted that the bones were remarkably well preserved, and all the specimens had been males, and in their forties when they died. The conservative suggestion that was that this had been A group of special Roman legionaries, chosen for their height. But there were a number of problems with this theory: First, the skeletons were not abnormally tall, due to pituitary overgrowth; rather, the bones were well proportioned and healthy--meaning they belonged to a truly giant race, and not of short Roman stock. Second, no Latin inscriptions were found with the remains to date them to the Roman period. In fact, no inscriptions were dug up whatsoever, leaving the age of the remains very much in question. And third, as researcher John T. Battle noted: “Roman soldiers were buried with their uniforms, armor, and weapons. Their military trappings were placed beside them in their coffins. But there was nothing in these coffins except the bones.”

Without a doubt the highest concentration of giant bones and giant artifacts are to be found in North America--which sheds light on a peculiar aspect of the forgotten history of this continent. The Desert Weekly of Salt Lake City, Utah, reported in the issue of March 14, 1891, a discovery made by workmen digging the foundation of a new hotel in Crittendon, Arizona—about 50 miles southeast of Tucson. Eight feet below the surface the workers came upon a large hardened clay sarcophagus and, prying the lid open, they found a granite case containing the skeleton of a man 12 feet tall. The unknown giant had had long hair, and wore a bird-shaped headdress. Unfortunately, by the time investigators arrived to examine the find, the bones had crumbled to dust. About that same time and in the same area--in an abandoned Indian cliff dwelling south of Winslow, Arizona a cowboy came upon an enormous human skull. Author Jesse J. Benton, who recorded the incident in his book *Cows By the Trail* tells how the cowhand put his own normal-sized stetson on the giant skull--and, in comparison, he reported, it looked like one of those tiny hats that merrymakers wear on New Year's.

In neighboring Nevada, a number of giant remains have been discovered in and around Lovelock Cave near Lovelock, eighty miles northeast of Reno. In 1911 a guano mining operation began unearthing large bones and mummies of several individuals who had once stood between 6 and 1/2 and 9 feet in height. John T. Reid, one of the mining engineers and also an amateur archaeologist, attempted to get professors from the University of California to see the strange remains. Finally one did arrive, accompanied by another "authority" from New York. The two gathered potsherds and basketry, and later published an article on these—but they would not have a thing to do with the "nonconformist" giant bones. In 1931 more skeletons--this time 8 feet and 10 feet long--were brought to light from the Humboldt lake bed near the Lovelock Cave. These had been bandaged in a gum covered cloth, like Egyptian mummies. And in 1939, still another specimen, this one 7 feet 7 inches, was discovered on the Friedman Ranch near Lovelock itself. Tragically, while various findings were all well-documented, the bones themselves were either eventually thrown away or in one case, a collection was destroyed by fire. Today, only a handful of the bones are kept by a private museum in Winnemucca.

In the mid-west and east many more titan remains have made unexpected appearances. From a mound 71 feet in diameter and about 4 feet high located in Brewersville, Indiana, a number of investigators uncovered in 1879 a number of skeletons, one of which was 9 feet 8 inches long. A necklace of mica was strung about his neck, and at his feet a human figure of fired clay imbedded with piece of flint had been placed. Flints and axes also buried with the bones were determined by the Indiana State Historical Society to be unlike any of those of the Indians in that area. These remains, however, were lost in a flood in 1937. About that same time, in Ohio, the American Antiquarian (volume 18, page 60) reported that another mound had produced a copper axe 22 inches long--and weighed 38 pounds. In 1925 at Walkerton--20 miles southwest of South Bend, Indiana--a group of amateur archaeologists opened still another mound, this one containing eight skeletons from 8 to 9 feet tall, wearing heavy copper armor. The bones and artifacts were unfortunately scattered and lost.

In the New England states, the 1880's saw the discovery of several gargantuan finds. During construction of a rail link between Cazenovia and Canastota, New York, five skeletons were unearthed, one of which was more than 11 feet long. Near Tioga Point, Pennsylvania, a team of antiquarians dug into yet another mystery mound. Among the team were state historian Dr. O. P. Donehue, professor A. B. Skinner of the American Investigating Museum, and Professor W. K. Morehead of Phillips Andover Academy. The astounded experts uncovered the bones of 68 men none of which were less than 7 feet tall. The remains were promptly sent to the American Investigating Museum in Philadelphia--and just as promptly lost. In 1886, an amateur archaeologist named W. N. Scovill probed into another mound at nearby Ellishurg, and found bones of a man almost 8 feet tall.

By far the highest number of giant remains for one area have been unearthed in Minnesota. Again, the decade of the 1880's was the time when most of the significant finds were made: The St Paul Pioneer Press on June 29, 1885 reported that mounds located west of Chatfield yielded six skeletons 7 to 8 feet tall, all with receding foreheads. Other men of the 8-foot category were unearthed by workers clearing ancient mounds to make way for expansion of a brick factory in Dresbach. These bones were so old that they crumbled to dust on exposure to air. At Clearwater, more mounds yielded up more giant skeletons, with receding foreheads and buried upside down. At La Crescent, mounds contained titan bones, with huge, flat cooking pans. The American Anthropologist, no. 5, vol. 8, p.229 described a stone axe head discovered "with the pointed end embedded in the soil at Birchwood". It was exhibited in the collection of the Missouri Historical Society, which found the axe to be 28 inches long, 14 inches wide, and 11 inches thick. The problem was--it weighed 300 pounds. In August, 1896,

the St. Paul Globe published an account of the findings of a 9-foot skeleton on a farm near Lake Koronis. The bones of 7-foot men turned up near Moose Island Lake, while a gravesite at Pine City brought to light seven more gargantuan skeletal frames. In 1882, a mound near Warren produced ten giant skeletons, as well as an added mystery: the bones of horses, animals which were not supposed to be found in America until after the advent of the Spanish in the sixteenth century.....

Why have so many giant remains been found in Wisconsin? It is noteworthy that the Sioux Indians have legends which claim that ages ago their forefathers slaughtered a race of giants in a battle in Minnesota. In fact many Indian legends throughout America recount how, before their people inhabited this land, a race of giants lived here, whom the Indians overwhelmed and wiped out in a war of genocide. Surprisingly, the Indian stories find confirmation in Greek, Hindu, Chinese and Incan literature.

#### Did a Giant Race Once Inhabit North America?

In 1833 a work party of soldiers was ordered to dig a foundation for a powder magazine at an army outpost on Lompock Rancho, in California. Their spades barely broke the surface when suddenly the soldiers came upon a layer of carefully placed stone and gravel. Breaking through this with bars and picks, the workers came upon an astounding sight. Below was a stone coffin surrounded by carved shells, a massive stone axe, large flint spear points, and several tablets of porphyry covered with an unknown script. But what the soldiers could not believe is what was lying in the coffin: the skeleton of a man who in life would have stood over 12 feet tall. A priest from a local Spanish mission was summoned by the commanding officer, to see if he could read the stones with writing, and determine the giant's origin. Though versed in several European languages and Church Latin, the padre found the script alien, and could only repeat the Bible passages concerning the days of old when "giants were in the earth" when he examined the bones. The Indians in a nearby settlement, however, heard of the find, and the shaman or "medicine man" of the tribe solved the mystery of the giant's origin. The bones, he said, were that of an *ahlegewi*, a race of titans who according to their legends had occupied the land before the Indians, and who the Indians wiped out in a war of extermination. The shaman demanded that the bones be turned over to his tribe, for the spirit of great strength and cunning were still in them, to be worshipped and rekindled by his people. But a potential uprising was the last thing the commander of the outpost wanted, so--as one of the officers who witnessed the events later recorded--the commander gave the bones and artifacts to the priest at the local mission, and he reburied them in a secret place. They have yet to be rediscovered today.....

The Indian legend which the shaman told is not just an isolated story, but is a tradition found among many Indian nations across North America. The Piutes of Nevada still speak today with strong distaste about a race of red-haired giants called by them the Sitecah, with whom their forefathers once fought. Finding no land to expand for their people, and constantly harassed by roving bands of these giants, the Piute of long ago allied with other intermountain tribes, and attacked the Sitecah. A long and bloody war ensued, with great casualties on both sides. Eventually the large numbers of Indians outweighed the superior strength and cunning of the giants, and the Sitecan were driven into the Pit River area near Shasta Lake and Mount Shasta--where they disappeared from history.

Other Indian legends, of the mid-west and east, record a war of even greater intensity. What is most interesting is that the Indians identify the ruins of the Mound Builders--those tens of thousands of mysterious earthworks found scattered throughout the Mississippi-Missouri-Ohio river valleys, from Georgia to Minnesota and from Nebraska to West Virginia--as having belonged to the giants. This contradicts modern conservative opinion which theorizes that the mound constructions were done by the ancestors of the Indians themselves. Some Indians say yes, their forefathers did indeed work on the earthworks--but as slaves to the giants, who were the real masterminds, while other Indians, especially the Sioux, Delaware and Iroquois, claim it was their ancestral peoples who defeated the giants and ended their mound-building projects. In fact

it has been in many of the ancient mounds found in Ohio, Indiana, Pennsylvania, New York and Minnesota that giant skeletons and artifacts were unearthed. The weight of evidence therefore points to the Indians' legends possessing the historical fact--not the conservative theories.

According to the Indian accounts (as preserved in Volume 12 of *Memoires of the Historical Society of Pennsylvania*), in the distant past the Delaware-Lenni-lenape peoples swept in a flood of migration from the far west, but on reaching the valleys west of the Mississippi, they were confronted by a well-entrenched people of tremendous stature and possessing a high civilization. These people they called the "Allegewi" or "Telligewi"--much the same as given to them by the California Indians, and after whom the Alleghany river and mountains were named. The progress of the Delaware-Lenni-lenape was stopped, and they were driven back but not discouraged. At the same time, the Iroquois people were trying to find a passage through Allegewi territory, from the north. Two migratory peoples eventually entered into an alliance together, and proclaimed war against the giants. One by one, the Allegewi strongholds fell, and the giants were forced to become wanderers along the streams and river-systems they had attempted to defend. Another tradition affirms that the primitive Indian invaders, because of their great numbers, successfully overwhelmed the ancient gargantuan inhabitants of the north-central states, and that the last great battle in this area was fought at the falls of the Ohio river, where the remnant was driven upon a small island below the rapids, and there the whole of them cut to pieces. The Indian chief, Tobacco, informed General George Rogers Clark of a legend in which was preserved the memory of a battle fought at Sandy Island, where "the first peoples of this land" had been slaughtered. Another Indian chief, Cornplanter, told that Ohio, Kentucky and Tennessee had once been inhabited by a gigantic white-skinned people, who were familiar with the arts of civilization, which his own forefathers knew nothing of. After a series of battles with the invading tribes, these former inhabitants were completely exterminated. The chief also declared that the old burial places--the mounds--were the graves of these indigenous giants, and that the great earthen fortresses had not been constructed by his people, but belonged to the "very long ago" people, who were huge, light-complexioned, and skilled in many arts. The Indians also had a superstition concerning the territory of what is now Kentucky. One Indian elder expressed his astonishment that present-day white folk would want to live in a region which had been the scene of such conflicts as had taken place there. An old Sac Indian, in 1800, said that Kentucky was filled with ghosts of its slaughtered giant inhabitants, and wondered why the white man could make it his home.

When we look at the Mound Builder earthworks in the northern and central states, it is interesting to note that they are mostly defense enclosures which, for the most part, face the north and west--the directions the Indians claim their forefathers invaded from.....

The memory that North America was once inhabited by giants has been preserved not only by the Indians, but also by ancient peoples in other parts of the world. One of the oldest Chinese literary works, the *Shan Hai King*, the "Classic of Mountains and Seas," a geography book dating back in its original form to 2250B.C. Recent analysis by experts has brought to light the fact that portions of this early work give a detailed and highly accurate description of the major mountains and rivers of North America--revealing that the ancient Chinese once undertook a scientific survey of this continent over 4,000 years ago. In the Ninth and Fourteenth Books of the *Shan Hai King* are fragments of observations made by the Oriental survey team of the various people inhabiting America at that time. In the regions of the "Southeast Corner to the Northeast Corner" (from Georgia to New England), as well as in the "Great Waste" (the western and south-western deserts), the Chinese called the "Great Men's Country." One of the surveyors, named Cheu-fu-Chang, found in the west not far from the "Great Canyon Where the Sun is Born"--the Grand Canyon--a wooden arrow with a metal point" 6 ½ feet long. He calculated that its owner must have been 12 to 15 feet tall. A

footnote to this discovery, given in the Fourteenth Book, tells how ancient Japanese sailors once encountered bad weather, and were driven onto the shores of the "Eastern Continent." There, before their return home, they encountered "tall savages of a foreign tribe" more than 11 feet high. Other early Chinese literature, such as Ho-tu's "Album of Gems" and the "Kuh-liang History" speak of strange lands beyond the Pacific called Ta-tsin" and "Lin-t'ao," where men of huge stature lived, leaving behind footprints many feet in size where they walked.

The giants of North America appear at one time to have been a restless, warlike breed, for several ancient sources describe their invasions of other lands. The last surviving Incan prince, and historian of his people, Garcilasco de la Vega, preserved the legend in his multi-volume opus Commentaries Reales de los Incas, that Peru was once attacked by a gigantic race from the North. He recounted that they first arrived by sea upon the northern Peruvian coast in the Manta region: "The giant men were strange to behold; their eyes were large, and their hair was worn long. They were beardless and their skin was light. A few of the giants wore animal skins for clothing; others walked the land without clothes. They built a settlement near the sea, at a spot along the desert land of the Manta region. They dug enormous wells." De la Vega further described how the giants, not finding enough to eat, began raiding local villages and cities, killing and pillaging, and striking terror in everyone because of their gigantic size. The Incan historian claimed that the giants were then struck dead from some catastrophe originating in the sky--and that all that is left of their reign of terror are giant bones scattered across the Peruvian countryside.....

The most detailed account of the American giants and their migrations comes to us from the Greek Theopompus of Chios, a student of Plato. The Roman chronicler Aelian, in his *Varia Historia* (c. A.D. 200) preserved portions of Theopompus' lost work *Maropidae*, written in 320 B.C. In this work, the Greek recorded a conversation between King Midas of Phrygia and the satyr Silenos. Theopompus--through Silenos--repeated Plato's accurate observation in the *Timaeus* and *Critias* that on the other side of the Atlantic Ocean from Europe is another land mass which he called the "outer continent." Silenos then proceeded to describe the inhabitants and nations of this distant western country: "The people are twice as tall as those common to our climate (Europe), As a race they are called Merops, and occupy that portion of the continent called Anostos ("no return"), its shores often covered by mist, and where the two rivers run nearby, the River of Pleasure and that of Grief, The Merops giants have several large towns governed according to their own customs. Among these are two which in no way resemble each other. The first is Eusebius (the peaceful). The earth is so productive of its fruits that its peoples need neither plows or oxen--it is unnecessary to sow or till the soil. The Eusebian giants die happily and smiling. The second metropolis is Machimos (the warlike), and here the inhabitants--numbering no less than two million--are very belligerent. They are always armed, always fighting, and work unceasingly to conquer, expanding their frontiers, thanks to which they command over several neighboring nations. Once, the Machimos giants desired to invade our islands (Europe), and gathered together from among themselves and the other nations of the outer continent they dominated a great host of ten million strong. They crossed the ocean, arriving on the shores of the land of the Hyperboreans (Britain). But upon learning that the Hyperboreans were the happiest of our nations, but which to their eyes was displeasing, the giants continued no further in their invasions."

The details presented by Theopompus find several interesting parallels in other Greek accounts. Homer, about 850 B.C., in his *Odyssey*, Book IX, described a land of gigantic "Cyclops" strikingly similar to the description above:

*"With heavy hearts we labor through the tide,  
To coasts unknown and oceans yet untried.  
The land of Cyclops first, a savage kind,  
Nor tamed by manners, nor by laws confined;  
Untaught to plant, to turn the glebe or sow;*

*They all their products to free nature owe.  
The soil untilled a ready harvest yields,  
With wheat and barley wave the golden fields."*

Homer also described in his Odyssey, Book VI, a people called the Phaeacians as once inhabiting "Hyperia," the land to the far north, but who were forced to move to new lands because of Cyclopean invasions:

*"In elder times the soft Phaeacian train  
In ease possessed the wide Hyperian plain;  
Til the Cyclopean race in arms arose,  
A lawless nation of gigantic foes;  
The great Nausithous from Hyperia far,  
Through seas retreating from the sounds of war,  
The recreant nation to fair Scheria led..."*

All the same elements are present here as found in Theopompus' account: Both refer to an invasion of Britain--Hyperia and Hyperborea are synonymous--by a Cyclopean or gigantic race at some time in the distant past. Herodotus the historian (Book IV, p. 2?), likewise spoke of the Arimaspians-- "one-eyed giants--who "lived at the northern-most limit of Europe." which Britain at that time was considered. Even the distant Hindus, who revealed their intimate and very accurate knowledge of Europe in the geographic portions of the Puranas, called Britain both the "White Island" and the "Island of the Mighty Ones." In the Ramayana Ravana inquires, "Where do the mighty ones dwell?" and is told by Narada, "They dwell in the White Island of Varaha-dwipa"--western Europe.

One last interesting point to take note of is that Theopompus divided the giants of America into two major groups--the "peaceful" and "warlike." Archaeologists examining the earthworks of the Mound Builders divide the structures into two general areas--north and south--each possessing their own particular architectural and artistic traits. Those mounds found among the southern states are characterized by temple platforms, truncated pyramids, etc. usually located in flat places, with no surrounding walls or other concerns for defense whatsoever. The northern Mound Builders were for the most part of a different nature: their earthworks were predominantly fortress enclosures, usually constructed on river terraces, where the summits provided good strongholds. In practically every example of these elaborate defense structures, there is displayed great engineering skill and military knowledge. The northern Mound Builders thus seem: to have been preoccupied with fighting and war--while their southern neighbors had no such preoccupation. Is it only coincidence that these are the very same characteristics of Theopompus' American giants?

We have only scratched the surface here in regards to the stories and legends, and bones and artifacts, found around the world and especially in America that demonstrate the existence of giants in the unknown past. Far more research and diggings are needed to fill in the gaps of what we still do not know. And at the same time, better recognition must be given to those facts which we do know. The whole notion of giants can no longer be relegated to the realm of fantasy their remains and works are real enough, and the stories of their exploits are based on actual memories of historical events. Perhaps someday, when we read again the account of Goliath in the Bible, we shall not smile in amusement, but realize that we are meeting face-to-face with a survivor of a forgotten race who once walked the earth, and built a lost civilization on the American continent....

## **Giant Skeletons**

- In his book, *The Natural and Aboriginal History of Tennessee*, author John Haywood describes "very large" bones in stone graves found in Williamson County, Tennessee, in 1821. In White County, Tennessee, an "ancient fortification" contained skeletons of gigantic stature averaging at least 7 feet in length.
- Giant skeletons were found in the mid-1800s near Rutland and Rodman, New York. J.N. DeHart, M.D. found vertebrae "larger than those of the present type" in Wisconsin mounds in 1876. W.H.R. Lykins uncovered skull bones "of great size and thickness" in mounds of Kansas City area in 1877.
- George W. Hill, M.D., dug out a skeleton "of unusual size" in a mound of Ashland County, Ohio. In 1879, a nine-foot, eight-inch skeleton was excavated from a mound near Brewersville, Indiana (*Indianapolis News*, Nov 10, 1975)
- A six foot, six inch skeleton was found in a Utah mound. This was at least a foot taller than the average Indian height in the area, and these natives- what few there were of them -were not mound builders.
- "A skeleton which is reported to have been of enormous dimensions" was found in a clay coffin, with a sandstone slab containing hieroglyphics, during mound explorations by a Dr everhart near Zanesville, Ohio. (*American Antiquarian*, v3, 1880, pg61)
- Ten skeletons "of both sexes and of gigantic size" were taken from a mound at Warren, Minnesota, 1883. (St. Paul *Pioneer Press*, May 23, 1883)
- A skeleton 7 feet 6 inches long was found in a massive stone structure that was likened to a temple chamber within a mound in Kanawha County, West Virginia, in 1884. (*American Antiquarian*, v6, 1884 133f. Cyrus Thomas, *Report on Mound Explorations of the Bureau of Ethnology*, 12th Annual Report, Smithsonian Bureau of Ethnology, 1890-91)
- A large mound near Gasterville, Pennsylvania, contained a vault in which was found a skeleton measuring 7 feet 2 inches. Inscriptions were carved on the vault. (*American Antiquarian*, v7, 1885, 52f) [click here for full article](#)
- In 1885, miners discovered the mummified remains of woman measuring 6 feet 8 inches tall holding an infant. The mummies were found in a cave behind a wall of rock in the Yosemite Valley. [click here for full article](#)
- In Minnesota, 1888, were discovered remains of seven skeletons 7 to 8 feet tall. (St. Paul *Pioneer Press*, June 29, 1888)
- A mound near Toledo, Ohio, held 20 skeletons, seated and facing east with jaws and teeth "twice as large as those of present day people," and besides each was a large bowl with "curiously wrought hieroglyphic figures." (Chicago *Record*, Oct. 24, 1895; cited by Ron G. Dobbins, *NEARA Journal*, v13, fall 1978)
- The skeleton of a huge man was uncovered at the Beckley farm, Lake Koronis, Minnesota; while at Moose Island and Pine City, bones of other giants came to light. (St. Paul *Globe*, Aug. 12, 1896)

- In 1911, several red-haired mummies ranging from 6 and a half feet to 8 feet tall were discovered in a cave in Lovelock, Nevada. [click here for the full article](#)
- In February and June of 1931, large skeletons were found in the Humboldt lake bed near Lovelock, Nevada. The first of these two skeletons found measured 8 1/2 feet tall and appeared to have been wrapped in a gum-covered fabric similar to the Egyptian manner. The second skeleton was almost 10 feet long. (*Review - Miner*, June 19, 1931)
- A 7 foot 7 inch skeleton was reported to have been found on the Friedman ranch, near Lovelock, Nevada, in 1939. (*Review - Miner*, Sept. 29, 1939)
- In 1965, a skeleton measuring 8 feet 9 inches was found buried under a rock ledge along the Holly Creek in east-central Kentucky. [click here for the full article](#)

#### ANOTHER GIANT FIND:

This One an “Enigma” From the Depths of the Earth--There is one find of gigantic bones that deserves special attention, because it belongs in a class by itself.

In July 1877, four prospectors were looking for gold and silver outcroppings in the desolate hills near the head of Spring valley, not far from Eureka, Nevada. Scanning the rocks, one of the men spotted something peculiar projecting from a high ledge. Climbing up to get a better look, the prospector was surprised to find a human leg-bone and knee cap sticking out of solid rock. He called to his companions and together they dislodged the oddity with picks. Realizing they had a most unusual find, the men brought it into Eureka, where it was placed on display.

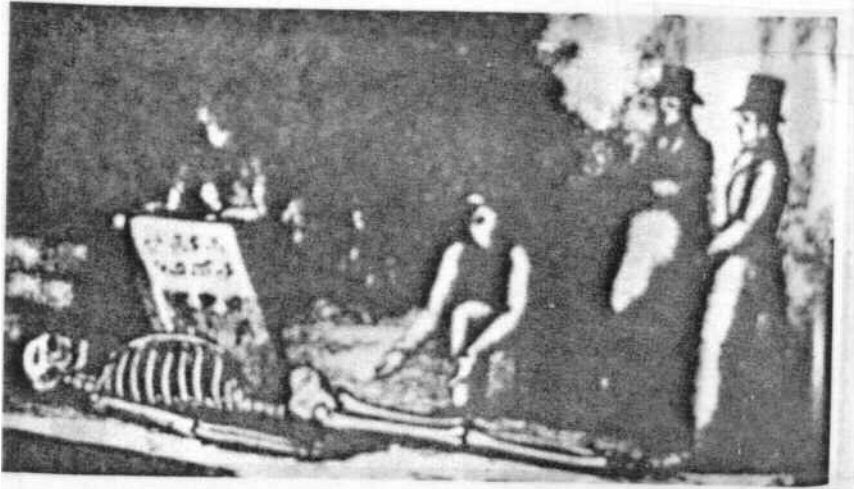
The stone in which the bones were embedded was a hard, dark red quartzite, and the bones themselves were almost black with carbonization indicative of a tremendous age. When the surrounding stone was carefully chipped away, the specimen was found to be composed of a leg bone broken off four inches above the knee, the knee cap and joint, the lower leg bones, and the complete bones of the foot. Several medical doctors examined the remains, and were convinced that anatomically they had indeed once belonged to a human being, and a very modern- looking one. But the most intriguing aspect of the bones was their size: From knee to heel they measured 39 inches. Their owner in life had thus stood over 12 ft tall. Compounding the mystery further was the fact that the rock in which the bones were dated geologically to the era of the dinosaur, the Jurassic.

Another report, this one from Australia, was received by the author in personal correspondence from Mr. Rex Gikoy of the Mount York Natural History Museum in Mount Victoria. Mr. Gikoy stated in his letter that he "prefers to keep an open mind, being free of all scientific prejudices and dogmas." He went on to state he is the "only archeologist in Australia researching on the likelihood that giant men once occupied this land." He described his findings. "The most common of all giant fossil footprints found in Australia are generally 24 inches long by 7 inches across the toes. It is estimated that the creatures to whom these prints belong must have stood from 10 to 12 feet tall."

Mr. Gikoy has also found stone artifacts belonging to humans of some type, "clubs, hammer stones and other types to 361bs. It is evident that such artifacts were beyond the strength of any normal



human being." In another place, Mr. Gilroy states, "I do believe that these were no mere apeman', but that they were men of considerable intellect for stone-age men."



A miner fell through a hole in a mine in Italy and found this 11'6" skeleton.



These tracks, by C. L. Burdick, are from the Paluxy River area. One is a track of a dinosaur and the other is the left footprint of a giant man. This man print is 15" long.

( From the Book Footprints On The Sands of Time by Dr Clifford Burdick Geologist )

**From book Treasures of the Ancients by Stephen B. Shaffer p. 31-32, Cedar Fort inc. 1996**

Dr. Heinerman followed Brewer into a tunnel that had been dug on a downward track, barely squeezing and squirming like a worm through the narrow passageway. After a short distance he came to an opening, and reaching down felt the edge of a set of stairs that led into a chamber. The chamber was about twenty feet long and fourteen feet wide. The air was stifling and breathing was very labored. Several inches of fine dust covered everything, and puffed up with each step that they took. About twenty-five stone boxes were stacked against one wall and another twenty against the other wall. Most were wrapped with a cover of juniper bark with pine pitch smeared all over them to make them waterproof. In a smaller chamber were two mummies of large stature.

Dr. Heinerman describes the mummies:

"The texture of their skin was soft, almost moist, like tanned leather. In the cave I saw an abundance of weapons, swords, tools, copper and metal plates of various sizes, all of which were very curious. Some of the copper, plates were of a strange composition, shattering like glass into fibrous pieces, not unlike the windshield of a car, if dropped. I believe that this chamber houses at least two different ages of antiquities." (See Pictures at the end of this paper )

**From the book Hidden Treasures of Ancient American Cultures by John Heinerman, 2001, Bonneville Books, Springville, Utah.**

Two young teenage boys, Orson W. Huntsman and David U. Huntsman, were out roaming around on a 10-mile stretch of grassy bench land situated between their father's big ranch and the town of Tooele. Now bordering this wide grassy region were surrounding hills that carried evident marks of the ancient shoreline of old Lake Bonneville. They were eager to explore around on this terrace to satisfy their own innate curiosities.

As they looked upward to a hill just above them, they noticed from a certain angle a hole in the side of it. With renewed excitement, they eagerly scrambled up to the entrance and discovered about ten feet inside, something very old, dry, and shriveled up. It looked to them like an old discarded "squash," which is what they called it. They continued further in and found themselves inside a very high and wide cavern of ancient origin. Excited beyond words, they took their "squash" with them and returned home to show their parents the mysterious find.

When Brigham Young and the other apostles arrived in Tooele a short time later, this "squash" was taken to him for further evaluation, accompanied with a written explanation of how it was found. President Young turned the curious object over in his hands a number of times as he examined it from all sides, while meditatively pondering on the matter at the same time. Finally, he broke his silence with a short statement to the effect that this supposed "old squash" was, in reality, the skull of an ancient Jaredite.

He and some of the others expressed a desire to meet the boys who made this discovery and accompany them to the place where it was first located. Given the propensity of cockiness in youth, the two Huntsman boys and their egos retched up several notches higher as they led the Prophet of the Lord and other servants of God back to the well-hidden cavern. With the air being in short supply and virtually no circulation inside the rock chamber, great care had to be taken going in. Torches were lit at the entrance way, and several men held aloft a wagon cover to create just enough air movement underneath, so they could continue burning while providing ample breathing space for those going inside.

The men had to move very slowly so as not to stir up several inches of yellow human dust that covered much of the cavern floor. The walls were lined with a number of stone shelves containing numerous skeletal remains. Awe and wonderment undoubtedly filled the minds of those privileged to see such ancient evidence for themselves. Finally, Prophet Young broke the spell-binding silence by declaring that "there were bones of the Jaredites, well a long time" (see Lamond W. Huntsman's *Huntsman Annals* (Provo: J. Grant Stevenson, 1971; pp.46-47).

An even more remarkable find of Jaredite skeletal remains occurred many years ago in Utah County. It was sometime in the mid-1930s when Utah Lake dropped to its lowest water levels ever, due to several years of virtually no moisture to speak of. A self-trained naturalist-geologist-archaeologist from nearby Lehi by the name of John Hutchings (then in his mid-forties), was able to walk out a good distance on dry lake bed where he located and excavated several large mounds. While digging into one of them near the lake's epicenter (that would normally have been under many feet of water), he struck what he assumed to be a large rock. But in the process of further digging around, his slight annoyance turned to amazement as he discovered a portion of an ancient, rounded, cemented stone roof that had once been covered with a pitch-like substance (apparently for water-proofing).

He had a small rock hammer and a pointed trowel with him in addition to his shovel. Patiently he worked away enough stone with these implements to form a hole large enough through which he could enter. Hutchings never went on any exploratory trip without taking along some matches and a miner's coal-oil lantern as well as adequate water and a little dried fruit to drink or much on whenever he became hungry or thirsty. He now realized just how handy that lantern would come in. But before lighting it, he walked several feet directly across from his first hole, dug another one and pried away some more stone. This now gave him both an entry and exit through which air could travel to keep his lantern from going out.

Once it was lit, he lowered it through the first opening and leaned in to have a better look. He gauged the distance to the floor to be only four feet, having been lucky enough to penetrate through on the room's circular perimeters instead of going in further towards the top, where the descent would have been much greater and probably required a rope (which he didn't have with him at the time) to do so. Once safely inside, he moved towards the center of the chamber where there was more head room and he could straighten up from his stooped position. A large stone box sealed with a heavy lid about the size of a small coffin sat in front of him. As he gradually turned around, the light reflecting off the walls revealed 12 very large skeletons carefully laid out around the stone chest in a clockwise arrangement, with the skulls facing inward towards the box.

Taking a tape measure from his trouser pocket, he measured several of the skeletons from head to foot with the lantern on the floor beside him. He was astonished by the measurements taken: eight-feet-four-inches for one; eight-feet-eleven-inches for another; and nine-feet-four-inches for a third. When my father took my brother and I, as young teenagers, out to visit Mr. Hutchings on July 21st, 1961, during the time of this spell-binding narrative, the 72-year-old gentleman paused long enough to remind us that it helps, at times like this, if one is a little clairvoyant. He told us that he was and had inherited this gift from his own father as a young child. Mr. Hutchings said that while he was inside what seemed to be an old burial chamber, his mind was trying to figure out what civilization had produced such giants as these. Just then a flash of intelligence crossed his mind with the idea that these were all Jaredite skeletons.

He next examined the stone chest itself and found by measuring its various dimensions to be thirty inches long, sixteen inches wide, and eighteen inches tall. As he thoughtfully paused to give some consideration to removing the sealed lid for an inspection of the contents inside, a feeling ebbed over him that such an act would be wrong to do. But a general disclosure of what the chest did contain was brought to his mind. He was given to understand that it contained a number of different metallic records giving the life histories of each of these individuals, all of whom apparently belonged to a royal family of some kind. This had been their burial chamber where the deceased members were interred. As he pondered the propriety of removing some of the remains themselves, a good feeling descended over him as an indication that such a thing was permissible.

He left the tomb and walked some distance back to his truck and retrieved half-a-dozen shaved wood bushel baskets with lids that fit over their wire handles. Orchard growers used these to store their picked apples, peaches, and pears in, but Mr. Hutchings used them to carry things that he found on his various jaunts, such as bird nests, Indian arrowheads and spear points, pottery shards, willow baskets, grass sandals, and rock and mineral specimens. He returned to the tomb and carefully placed six of the complete skeletons into each bushel basket. He remarked to my father, brother and I in his narration that the arm bones were so long on some of these skeletons, "the hand-and-finger bones almost reached the kneecaps on a few of them." He closed up both holes after exiting the chamber and made sure all evidence of human presence in the area was obliterated before leaving the spot. He gave three skeletons to the University of Utah and two others to Brigham Young University, keeping the best one of the bunch for himself. He told professors at both schools how he came by way of them, but instead of winning their compliments, he suffered their scorn and ridicule. "They just laughed at me, saying there was no such thing in the middle of Utah Lake," my father later recorded in his unpublished life's history.

"After that I wanted nothing more to do with professors or educated men" (taken from "My Life's Journal" by Jacob Heinerman, pp.31-37).

An early LDS newspaper, The Evening and Morning Star (1(3):22; August 1832) identified exceptionally large skeletons (like those previously referred to in this text) as being ancient Jaredites:

"...As they were a very large race of men, whenever we hear that uncommon large bones have been dug up from the earth, we may conclude, that was the skeleton of a Jaredite! Outside of the Beehive State, skeletons of gigantic proportions have been found in other parts of America, including some along the Western Reserve (a tract of land in NE Ohio, on the southern shore of Lake Erie).

From the Journal History of the Church under September 8th, 1880 (p.3) is a clipping from the Cincinnati (Ohio) Enquirer about an excavated mound in Muskingum County filled with giant remains. "In one grave, there were two skeletons - one male and one female. The male skeleton measured nine feet in length, and the female eight feet. In another grave were also found two skeletons - male and female. The male frame in this case was nine feet four inches in length, and the female eight feet. In another grave was found a female skeleton, holding in her arms the skeleton of a child three feet and a half long. [A] remaining seven [skeletons] were found in single graves, and were lying on their sides. The smallest of the seven was nine feet in length, and the largest ten."

Some of the antiquarian city, county, and state histories of the early 19th century contain occasional references to extraordinary-sized human remains. Case in point would be Harvey Rice's Pioneers of the Western Reserve (p.303), in which he described an ancient burial ground that was uncovered in 1800. Concerning the giant skeletons found in this particular Ohio mound, we read: "Human bones of gigantic proportions were discovered in such a state of preservation as to be accurately described and measured. The cavities of the skulls were large enough in their dimensions to receive the entire head of a man of modern times, and could be put on one's head with as much ease as a hat or cap. The jaw-bones were sufficiently large to admit being placed so as to match or fit the outside of a modern man's face. The other bones, so far as discovered, appeared to be of equal proportions with the skulls and jaw-bones. Several of [these] have been preserved as relics in the cabinets of antiquarians, where they may still be seen."

### **An Ancient Cemetery of Giants Near Niagara, NY**

(From The Daily Telegraph , Toronto, Ontario Wed August 23, 1871 )

#### **TWO HUNDRED GIANT SKELETONS OF ANAKIN IN CAYUGA TOWNSHIP DISCOVERED IN ANCIENT CEMETARY**

Cayuga, August 21-- "On Wednesday last, Rev. Nathaniel Wardell, Messers. Orin Wardell (of Toronto), and Daniel Fredenburg, were digging on the farm of the latter gentleman, which is on the banks of the Grand River, in the township of Cayuga. When they got to five or six feet below the surface, a strange sight met them. Piled in layers, one upon top of the other, some two hundred skeletons of human beings nearly perfect-- around the neck of each one being a string of beads.

"There were also deposited in this pit a number of axes and skimmers made of stone. In the jaws of several of the skeletons were large stone pipes-- one of which Mr. O. Wardell took with him to Toronto a day or two after this Golgotha was unearthed.

"These skeletons are those of men of gigantic stature, some of them measuring nine feet, very few of them being less than seven feet. Some of the thigh bones were found to be at least a foot longer than those at present known, and one of the skulls being examined completely covered the head of an ordinary person. These skeletons are supposed to belong to those of a race of people anterior to the Indians.

"The farm, which consists of 150 acres, has been cultivated for nearly a century, and was covered with a thick growth of pine, so that it must have been ages ago since the remains were deposited there. The skulls of the skeletons are of an enormous size and all manner of shapes,

about half as large again as are now to be seen. The teeth in most of them are still in almost perfect state of preservation, though they soon fall out when exposed to the air.

Some large shells, supposed to have been used for holding water, which were also found in the pit, were almost petrified. There is no doubt that were a scheme of exploration carried on thoroughly the result would be highly interesting. A good deal of excitement exists in the neighborhood, and many visitors call at the farm daily.

"The skulls and bones of the giants are fast disappearing, being taken away by curiosity hunters. It is the intention of Mr. Fredinburg to cover the pit up very soon. The pit is ghastly in the extreme. The farm is skirted on the north by the Grand River. The pit is close to the banks,

From the appearance of the skulls, it would seem that their possessors died a violent death, as many of them were broken and dented.

"The axes are shaped like tomahawks, small, but keen, instruments. The beads are all of stone and of all sizes and shapes. The pipes are not unlike in shape the cutty pipe, and several of them are engraved with dogs' heads. They have not lost their virtue for smoking. Some people profess to believe that the locality of Fredinburg farm was formally an Indian burial place, but the enormous stature of the skeletons and the fact that pine trees of centuries growth covered the spot goes far to disprove this idea" (Taken Fro Ancient American Vol. 6 , Number 41, 2001)

In 1872, the *Historical Collections of Noble County Ohio* (p. 350,351), a mound was uncovered, in which were found "the remains of three skeletons whose size would indicate they measured in life at least eight feet in height. The remarkable feature of these remains was they had double teeth in front as well as in back of mouth and in both upper and lower jaws. Upon exposure to the atmosphere the skeletons crumbled back to mother earth."

## Giants

Reprint: Facts for the Times: A collection of Valuable Historical Extracts, pages 1 71-72

G.I.Butler, 1885

In the first age of the world, man lived almost a thousand years; while now he rarely exceeds the allotted threescore and ten.

This is clearly shown, not only by the Bible and ancient history, but by the discoveries of antediluvian remains.

*The Gospel Herald* of Dayton, Ohio, gives the following account:

In the Scientific Department of one of our most popular weekly exchanges, we find an interesting account of a large human skeleton. recently discovered in Am, France.

The frame is complete in all its parts, and is four yards in height. It was found in a soil of alluvium, the head buried in the earth, with the feet upward.

Day before yesterday, while the quarrymen employed by the Sauk Rapids Water Power Company (Minnesota) were engaged in quarrying rock for the dam which is being erected across the Mississippi at this place, they found embedded in the solid granite rock the remains of a human being of gigantic stature.

About seven feet below the surface of the ground, and about three and a half feet beneath the upper stratum of rock, the remains were found imbedded in the sand, which had evidently been placed in the quadrangular grave which had been dug out of the solid rock to receive the last remains of this antediluvian giant.

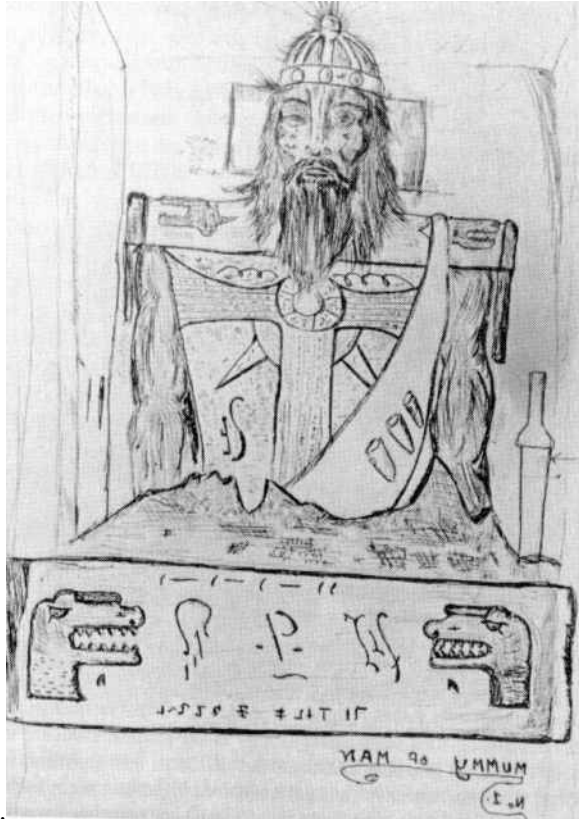
The grave was twelve feet in length, four feet wide, and about three feet in depth, and is today, at least two feet below the present level of the river.

The remains are completely petrified, and are of gigantic dimensions. The head is massive, measures thirty one and one half inches in circumference. but low in the os frontis, and very flat on the top.

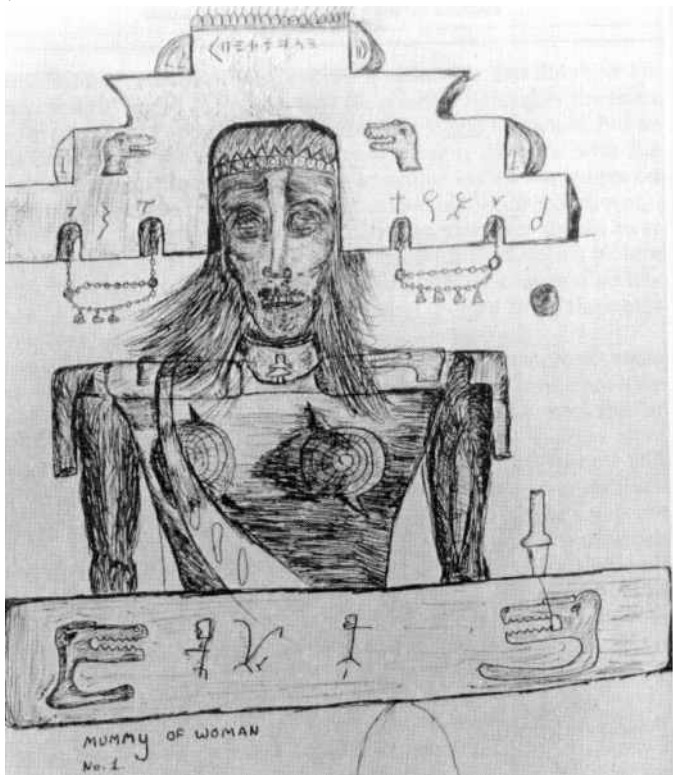
The femur measures twenty six and a quarter inches. and the fibula twenty five and a half, while the body is equally long in proportion.

From the crown of the head to the sole of the foot. the length is ten feet nine and a half inches. The measure around the chest is fifty nine and a half inches. This giant must have weighed at least nine hundred pounds when covered with a reasonable amount of flesh.

(Taken From Ancient American Issue # 43, p. 17 )



Sketch of Manti Mummy (male) and figures on Mummy case. Mummy was 8 ft tall, Note figures of dinosaur head. (From Hidden Treasures of Ancient American Cultures)



Sketch of Female Mummy From Manti Cave . Mummy 8 ft tall (From Hidden Treasures of Ancient American Cultures)



■ FROM THE GEOGRAPHIC ARCHIVES

### **Standing Tall in the Land of Genghis Khan**

During the first of five expeditions to Mongolia, Roy Chapman Andrews photographed this seven-foot-five-inch man in 1922 in the capital city of Ulaanbaatar—

This photograph was never published in the magazine.

NATIONAL GEOGRAPHIC, DECEMBER 1996



## 47 inch Human Femur

In the late 1950s, during road construction in south-east Turkey in the Euphrates Valley, many tombs containing the remains of Giants were uncovered.

At two sites the leg bones were measured to be about 120 cms "47.24 inches".

Joe Taylor, Director of the Mt. BLANCO FOSSIL MUSEUM in Crosbyton, Texas, was commissioned to sculpt this anatomically correct, and to scale, human femur.

This "Giant" stood some 14-16 feet tall, and had 20-22 inch long feet. His or Her finger tips, with arms to their sides, would be about 6 feet above the ground.

The Biblical record, in Deuteronomy 3:11 states that the Iron Bed of Og, King of Bashan was 9 cubits by 4 cubits or approximately 14 feet long by 6 feet wide!

### GENESIS 6:4

*There were Nephilim (Giants) in the earth in those days; and also after that when the sons of God (Angels?) came in unto the daughters of men, and they bare children to them, the same became mighty men which were of old, men of renown.*

More Info & Replicas available at [mtblanco1@aol.com](mailto:mtblanco1@aol.com) or [www.mtblanco.com](http://www.mtblanco.com)  
Mt. Blanco Fossil Museum • P.O. Box 559, Crosbyton, TX 79322 • 1-800-367-7454



# Maximinus Thrax

Imperator Caesar Gaius  
Iulius Verus Maximinus Pius  
Felix Invictus Augustus  
Augustus  
235–238



MAXIMINUS THRAX	
<i>Born 172 or 173 in Thrace or Moesia</i>	<i>Children</i> a son Gaius Julius Verus Maximinus
<i>Accession February or March 235</i>	<i>Murdered by the troops at Aquileia April 238</i>
<i>Wife</i> Caecilia Paulina	

Maximinus was probably the biggest man ever to hold the office of Roman emperor. The *Historia Augusta* has it that he was 8 ft 6 in (2.6 m) tall, and so strong that he could pull laden carts unaided! The size of his footwear was also legendary, and the expression 'Maximinus's boot' came to be used in popular parlance for any tall or lanky individual. Surviving portrait busts, such as this one from the Louvre, show Maximinus as a heavily-muscled man with powerful jaw and close-cropped hair, the image of a seasoned soldier. Not for him the meditative, spiritual pose favoured by Alexander Severus.

In 1895, miners working near Bridlevale Falls, California, discovered the tomb of a woman whose skeletal remains indicated that she had stood 6-feet 8-inches in height. She was clutching the remains of a child to her breast. In 1898, scientists excavating in Death Valley found the fossilized remains of a female who stood 7-feet 6-inches in height and whose spine bore several extra "buttons" at its base, indicating that in life the woman had been endowed with a tail-like appendage. In 1974, the skeleton of a 7-foot woman was found sealed in a cave at the crest of a high mesa near Chalk Mountain, Texas.

“Amazing finds were also made in California about 1810 and in Montana in 1924. One was that of a six-toed giant, the other was the skull of a man found 130 feet deep in a lava-covered mine. A human molar embedded in an eocene coal measure was found in November 1926 in No. 3 Eagle Coal Mine at Bearcreek, Montana, and in strata anywhere between thirty and seventy-five million years old. An amazing skull—there is no other word for it!—of a giant man with double rows of teeth all round the massive jaws was found on Santa Rosa Island in the Santa Barbara Channel, California. It has a singular tie-in with the statement in the old Babylonian *Talmud*, called the *Berakthoth*, that the giants before the Great Deluge had double rows of teeth!....

On Shemya the men’s job was to build an airstrip for landing purposes. One day in May 1943, a remarkable discovery was made. At the northeast end of this tiny island is a bluff of sedimentary rock, and below it, on the beach, are strewn igneous and sedimentary boulders. When these beach boulders were shifted, the bulldozers started to work and turned up layer on layer of fossils, each layer differing from that below it.

In one of these layers were huge human bones and skulls of giants, lying near fossil ivory and mammoth and mastodon bones. Some of these giant human skulls lacked the lower jaw. The skulls were from one foot ten inches to two feet long! They were emphatically human and not animals. The bones of the animals lay far enough apart for them to be clearly perceptible.

The height of these giants measured no fewer than twenty-four feet! I questioned my informant and he was positive in his affirmation of the astounding height of these men—a height that tallies with that asserted in ancient

His story goes on: “These giant remains in the Shemya beach were found about six feet below the surface. The ground where the skulls and bones were found is swampy and sandy, and the beach was just muck and deteriorated rock. Mixed in with the big bones were smaller ones. They might have been deposited there in a cataclysm, but there is evidence that this may have been also an ancient graveyard of the giants. It is curious that all these skulls of giant men had holes in them two inches in diameter. Maybe that was in accord with the notion of ancient folk that you could let the soul out of the head by trephining the crania. It may have been done with clubs or arrows, but as all the skulls were perforated, I reckon it is more likely that an ancient ritual was followed?”

( From Out of Time and Place, P. 65 From the files of **Fate Magazine**, 1999, Liewellyn Publications, St Paul, Minn. )

## **Giant Human Remains**

**- From records and sources all over the world. -submitted by John Williams**

### **Giant Skeletons:**

**In his book, *The Natural and Aboriginal History of Tennessee*, author John Haywood describes "very large" bones in stone graves found in Williamson County, Tennessee, in 1821. In White County, Tennessee, an "ancient fortification" contained skeletons of gigantic stature averaging at least 7 feet in length.**

**Giant skeletons were found in the mid-1800s near Rutland and Rodman, New York. J.N. DeHart, M.D. found vertebrae "larger than those of the present type" in Wisconsin mounds in 1876. W.H.R. Lykins uncovered skull bones "of great size and thickness" in mounds of Kansas City area in 1877.**

**George W. Hill, M.D., dug out a skeleton "of unusual size" in a mound of Ashland County, Ohio. In 1879, a nine-foot, eight-inch skeleton was excavated from a mound near Brewersville, Indiana (Indianapolis News, Nov 10, 1975).**

**A six foot, six inch skeleton was found in a Utah mound. This was at least a foot taller than the average Indian height in the area, and these natives- what few there were of them -were not mound builders.**

**"A skeleton which is reported to have been of enormous dimensions" was found in a clay coffin, with a sandstone slab containing hieroglyphics, during mound explorations by a Dr Everhart near Zanesville, Ohio. (American Antiquarian, v3, 1880, pg61).**

**Ten skeletons "of both sexes and of gigantic size" were taken from a mound at Warren, Minnesota, 1883. (St. Paul Pioneer Press, May 23, 1883) A skeleton 7 feet 6 inches long was found in a massive stone structure that was likened to a temple chamber within a mound in Kanawha County, West Virginia, in 1884. (American Antiquarian, v6, 1884 133f. Cyrus Thomas, Report on Mound Explorations of the Bureau of Ethnology, 12th Annual Report, Smithsonian Bureau of Ethnology, 1890-91).**

**A large mound near Gasterville, Pennsylvania, contained a vault in which was found a skeleton measuring 7 feet 2 inches. Inscriptions were carved on the vault. (American Antiquarian, v7, 1885, 52f).**

**In 1885, miners discovered the mummified remains of woman measuring 6 feet 8 inches tall holding an infant. The mummies were found in a cave behind a wall of rock in the Yosemite Valley.**

**In Minnesota, 1888, were discovered remains of seven skeletons 7 to 8 feet tall. (St. Paul Pioneer Press, June 29, 1888).**

**A mound near Toledo, Ohio, held 20 skeletons, seated and facing east with jaws and teeth "twice as large as those of present day people," and besides each was a large bowl with "curiously wrought hieroglyphic figures." (Chicago Record, Oct. 24, 1895; cited by Ron G. Dobbins, NEARA Journal, v13, fall 1978).**

**The skeleton of a huge man was uncovered at the Beckley farm, Lake Koronis, Minnesota; while at Moose Island and Pine City, bones of other giants came to light. (St. Paul Globe, Aug. 12, 1896).**

**In 1911, several red-haired mummies ranging from 6 and a half feet to 8 feet tall were discovered in a cave in Lovelock, Nevada. In February and June of 1931, large skeletons were found in the Humboldt lake bed near Lovelock, Nevada. The first of these two skeletons found**

measured 8 1/2 feet tall and appeared to have been wrapped in a gum-covered fabric similar to the Egyptian manner. The second skeleton was almost 10 feet long. (Review - Miner, June 19, 1931).

A 7 foot 7 inch skeleton was reported to have been found on the Friedman ranch, near Lovelock, Nevada, in 1939.(Review - Miner, Sept. 29, 1939) In 1965, a skeleton measuring 8 feet 9 inches was found buried under a rock ledge along the Holly Creek in east-central Kentucky.

#### **AUSTRALIAN GIANTS:**

There was a race or group of people found in Australia called "meganthropus" by anthropologists. These people were of very large size--estimated between 7 to 12 feet tall, depending on what source you read. These people were found with mega tool artifacts, so their humanness is difficult to question. Four jaw fragments and thousands of teeth have been found in China of "gigantopithecus blacki"--named after the discover. Based on the size of the teeth and deep jaws, its size has been estimated at around 10 feet and as tall as 12 feet, 1200 pounds.

#### **PROOF OF AUSTRALIAN GIANTS:**

In old river gravels near Bathurst, NSW, huge stone artifacts -- clubs, pounders, adzes, chisels, knives and hand axes -- all of tremendous weight, lie scattered over a wide area. These weigh anything from 8, 10, 15, to 21 and 25 pounds, implements which only men of tremendous proportions could possibly have made and used. Estimates for the actual size of these men range from 10 to 12 feet tall and over, weighing from 500 to 600 lbs. A fossicker searching the Winburndale River north of Bathurst discovered a large quartzitised fossil human molar tooth, far too big for any normal modern man. A similar find was made near Dubbo, N.S.W.

Prospectors working in the Bathurst district in the 1930's frequently reported coming across numerous large human footprints fossilised in shoals of red jasper.

Even more impressive were fossil deposits found by naturalist Rex Gilroy around Bathurst. He excavated from a depth of 6 feet (2 m) below the surface a fossil lower back molar tooth measuring 67 mm. in length by 50mm. x 42 mm. across the crown. If his measurements are correct, the owner would have been at least 25 ft. tall, weighing well over 1,000 lbs!

At Gympie, Queensland, a farmer, Keith Walker, was ploughing his field when he turned up the large fragment of the back portion of a jaw which still possessed the hollow for a missing lower back molar tooth. This is now in Rex Gilroy's possession. The owner of the tooth would have stood at 10 feet tall.

In the Megalong Valley in the Blue Mountains NSW, a Mr P. Holman found in ironstone protruding from a creek bank the deeply impressed print of a large human-like foot. The print was that of the instep, with all 5 toes clearly shown. This footprint measures 7 inches

across the toes. Had the footprint been complete it would have been at least 2 feet (60 cm in length, appropriate to a 12 foot human. However, the largest footprint found on the Blue Mountains must have belonged to a man 20 feet tall!

A set of 3 huge footprints was discovered near Mulgoa, south of Penrith, N.S.W. These prints, each measuring 2 ft long and 7 inches across the toes, are 6 ft. apart, indicating the stride of the 12 ft. giant who left them. These prints were preserved by volcanic lava and ash flows which "occurred millions of years" before man is supposed to have appeared on the Australian continent (if one is to believe the evolutionary theory): Noel Reeves found monstrous footprints near Kempsey, N.S.W. in sandstone beds on the Upper Macleay River. One print shows toe 4 inches (10cm) long and the total toe-span is 10 inches (25cm) - suggesting that the owner of the print may have been 17 feet tall.

It is certain the Aborigines were not the first to reach Australia. Anthropologists maintain mainland Aborigines are in fact quite recent arrivals that ate their predecessors who were akin to the New Guinea natives. Aborigine themselves admit in their ancient folklore that this land was inhabited by several groups of men, as well as giants, before they settled here.

#### **MORE GIANT RECORDS:**

In an old book entitled "History And Antiquities Of Allerdale," there is an account of a giant found in Cumberland, England, at an unknown date in the middle ages. Called "A True Report of Hugh Hodson, of Thorneaway," it states: "The said gyant was buried four yards deep in the ground, which is now a corn field. He was four yards and a half long, and was in complete armor; his sword and battle-axe lying by him....his teeth were six inches long, and two inches broad...." The bones of a twelve foot tall man were dug up in 1833 by a group of soldiers at Lompock Rancho, California. The skeleton was surrounded by giant weapons, and the skull featured a double row of teeth. Yet another giant was unearthed in 1891, when workmen in Crittenden, Arizona excavated a huge stone coffin that had evidently once held the body of a man 12 feet tall. A carving on the granite case indicated that he had six toes.

A living giant was sighted in the little village of Buffalo Mills, Pennsylvania, on August 19, 1973. A man at least nine feet tall strode down the main street of the village, dressed in strange clothing, which appeared to be made of some sort of shimmering material. He gazed at the startled townspeople in a dark, penetrating way and then loped off casually into oblivion.

#### **OTHER GIANT EVIDENCES:**

In July, 1877, four prospectors were looking for gold and silver outcroppings in a desolate, hilly area near the head of Spring Valley, not far from Eureka, Nevada.

Scanning the rocks, one of the men spotted something peculiar projecting from a high ledge. Climbing up to get a better look, the prospector was surprised to find a human leg bone and knee cap sticking out of solid rock. He called to his companions, and together they dislodged

the oddity with picks. Realizing they had a most unusual find, the men brought it into Eureka, where it was placed on display.

The stone in which the bones were embedded was a hard, dark red quartzite, and the bones themselves were almost black with carbonization - indicative of great age. When the surrounding stone was carefully chipped away, the specimen was found to be composed of a leg bone broken off four inches above the knee, the knee cap and joint, the lower leg bones, and the complete bones of the foot. Several medical doctors examined the remains, and were convinced that anatomically they had indeed once belonged to a human being, and a very modern-looking one.

But an intriguing aspect of the bones was their size: from knee to heel they measured 39 inches. Their owner in life had thus stood over 12 feet tall. Compounding the mystery further was the fact that the rock in which the bones were found was dated geologically to the era of the dinosaurs, the Jurassic - over 185 million years old. The local papers ran several stories on the marvelous find, and two museums sent investigators to see if any more of the skeleton could be located. Unfortunately, nothing else but the leg and foot existed in the rock." Strange Relics from the Depths of the Earth--Jochmans  
<http://www.ior.com/~kjc/pages/strange.htm>

#### **EVEN MORE RECORDS OF GIANTS:**

In 1936 Larson Kohl, the German paleontologist and anthropologist, found the bones of gigantic men on the shore of Lake Elyasi in Central Africa. Other giant skeletons were later found in Hava, the Transvaal and China. The evidence for the existence of giants is incontrovertible. "A scientifically assured fact," says Dr. Louis Burkhalter.

1. Large bones in stone graves in Williamson County and White County, Tennessee. Discovered in the early 1800s, the average stature of these giants was 7 feet tall.
2. Giant skeletons found in the mid-1800s in New York state near Rutland and Rodman.
3. In 1833, soldiers digging at Lompock Rancho, California, discovered a male skeleton 12 feet tall. The skeleton was surrounded by caved shells, stone axes, other artifacts. The skeleton had double rows of upper and lower teeth. Unfortunately, this body was secretly buried because the local Indians became upset about the remains.
4. A giant skull and vertebrae found in Wisconsin and Kansas City.
5. A giant found off the California Coast on Santa Rosa Island in the 1800s was distinguished by its double rows of teeth.
6. A 9-foot, 8-inch skeleton was excavated from a mound near Brewersville, Indiana, in 1879.
7. Skeletons of "enormous dimensions" were found in mounds near Zanesville, Ohio, and Warren, Minnesota, in the 1880s.
8. In Clearwater Minnesota, the skeletons of seven giants were found in mounds. These had receding foreheads and complete double dentition.
9. At Le Crescent, Wisconsin, mounds were found to contain giant bones. Five miles north near Dresbach, the bones of people over 8 feet tall were found.
10. In 1888 seven skeletons ranging from seven to 8 feet tall were discovered.
11. Near Toledo, Ohio, 20 skeletons were discovered with jaws and teeth "twice as large as those of present day people." The account also noted that odd hieroglyphics were found

with the bodies.

12. Miners in Lovelock Cave, California, discovered a very tall, red-haired mummy In 1911

13. This mummy eventually went to a fraternal lodge where it was used for "initiation purposes."

14. In 1931, skeletons from 8 ½ to 10 feet long were found in the Humboldt lake bed in California.

15. In 1932, Ellis Wright found human tracks in the gypsum rock at White Sands, New Mexico. His discovery was later backed up by Fred Arthur, Supervisor of the Lincoln National Park and others who reported that each footprint was 22 inches long and from 8 to 10 inches wide. They were certain the prints were human in origin due to the outline of the perfect prints coupled with a readily apparent instep.

16. During World War II, author Ivan T. Sanderson tells of how his crew was bulldozing through sedimentary rock when it stumbled upon what appeared to be a graveyard. In it were crania that measured from 22 to 24 inches from base to crown nearly three times as large as an adult human skull. Had the creatures to whom these skulls belonged been properly proportioned, they undoubtedly would have been at least 12 feet tall or taller.

17. In 1947 a local newspaper reported the discovery of nine-foot-tall skeletons by amateur archeologists working in Death Valley.

18. The archeologists involved also claimed to have found what appeared to be the bones of tigers and dinosaurs with the human remains.

19. The Catalina Islands, off California, are the home of dwarf mammoth bones that were once roasted in ancient fire pits. These were roasted and eaten by human-like creatures who were giants with double rows of teeth.

#### **THE KOSSUTH GIANTS:**

**Kossuth:** October was a month of some excitement in scientific circles as seven strange and gigantic mummies were discovered just outside of Kossuth Center. Marvin Rainwater, a local farmer, had been digging a new well on his property and struck a deposit of very hard stone about nine feet below the topsoil. In attempting to dig it out, he found that it was more than four feet wide in every direction. Removing it would be a terrific chore. He considered the possibility that this was a layer of bedrock, but that would certainly be odd that close to the surface. Further, being somewhat familiar with geologic deposits, he knew that the stone was not the familiar limestone for which such Eastern Iowa areas like Stone City are famous. This

was something else entirely. Upon close inspection Rainwater also saw that the stone was not as rough as might be expected in a natural formation, but was in fact smooth and polished. Now very curious as to the nature of the find, he called several friends from surrounding farms and they began an excavation. They discovered that it was not a single stone, but rather one of at least several irregularly cut slabs stretching out over a wide area, yet fitted so tightly together that not even a knife blade could be put between them. Each slab measured roughly 8'x10', and when struck with a sledge seemed to ring with a hollowness that might indicate this was not a floor but the outside portion of a ceiling. Rainwater wondered if he had not stumbled upon some sort of buried stone structure on his property. Believing that there might be a way to parlay living other than farming if he played his cards right, Mr. Rainwater contacted Georg Von Podebrad College, who in turn dispatched a team of archeologists, anthropologists, and geologists to the site. The researchers were delighted with the anomalies presented them. Firstly, the stone was not at all native to Iowa, but was in fact basalt-a hard, dense volcanic rock composed of plagioclase, augite, and magnetite. The type of stone used by the Egyptians to build their massive monuments. The depth of the slabs indicated

that they had been there for a very long time, predating the advent of the kind of modern transportation and heavy machinery needed to bring such a large quantity of foreign stone to Iowa, and quite probably the slabs had been laid down before the last glacial age.

It is impossible to gauge with any certainty just how long they had been there. After the soil covering the slabs had been entirely removed, the area covered by the stones was a perfect square measuring 188 feet on each side. Digging around the perimeter revealed that Rainwater had been correct, the structure did go deeper into the ground. The cyclopean structure was revealed to be a pyramid similar in shape to one located at Marietta, Ohio, although those mounds and monuments erected by the prehistoric Indians were made of sun dried brick mixed with rushes. This technique, too, is curiously similar to the Egyptian technique of brick making with straw and mud. It took many months, but the entire structure was finally exposed, and on the eastern side was found a massive filled in archway with strong resemblance to those of ancient Greece. At the bottom of the arch was a smaller arch, measuring only 6' to the capstone. This too had been filled in and blocked off. With genuine awe and some hesitancy the scientists of the Rainwater

Site began the work of opening the smaller entryway, wondering what light from the first torch penetrated the gloom of the ancient structure, Albert Grosslockner gasped at what he thought were seven huge and exquisitely detailed statues seated in a ring around a very large and deep fire pit. Moving closer, he realized that the figures were not carved of stone, but were in fact the mummified remains of some giant humanoid race.

Could what they found be in fact a prehistoric burial vault for some pre-human creatures or was it a prison designed to hold some freakish aberration of nature? The figures, were each fully ten feet tall even when measured seated in their cross-legged positions. They all faced into the circle with arms folded across their legs. Upon close examination it was seen that they had double rows of teeth in their upper and lower jaws. The foreheads were unusually low and sloping, with exceedingly prominent brows. The skin of the mysterious giants was wrinkled and tough, as though tanned, and the hair of each of them was distinctly red in color. Their faces, still very expressive even in death, taunted the scientists with their silence. Who, or what, were these creatures, how had they come to be locked in this stone room, and where had the stone itself come from originally? After careful excavation of the site, the bodies were removed for x-ray and autopsy examination. The excitement over the find was far in excess of the "Gypsum Man" find in Iowa so many years before-a hoax from which the Putnam Museum of Davenport had never fully recovered from. These giants were very real. The medical examinations demonstrated that there was definite skeletal structure, that they were organic creatures who had once been very much alive.

One explanation for the mummies might lie in the legends of the Paiute Indians who tell of a race of red-haired giants who were their mortal enemies centuries ago. They were called the Si-Te-Cahs, driven from Nevada by a previously unheard of alliance of tribes. Did the Si-Te-Cahs retreat from the west to Iowa? Was the stone structure here before and simply co-opted by the giants? No one may ever know, however it is interesting to note that among the Indian relics held in the Kossuth County chapter of the State Historical Society are three robes made entirely from very long strands of red hair. We await DNA comparisons of samples taken from the mummies and the robes to determine a connection. In the mean-time, Marvin Rainwater has had his farm purchased by interested parties in Hopkins Grove for an undisclosed sum, and is quite happily no longer toiling in his fields or digging wells.



## **GIANT SKULLS FOUND:**

Ivan T. Sanderson, a well-known zoologist and frequent guest on Johnny Carson's **TONIGHT SHOW** in the 1960s (usually with an exotic animal with a pangolin or a lemur), once related a curious story about a letter he received regarding an engineer who was stationed on the Aleutian island of Shemya during World War II. While building an airstrip, his crew bulldozed a group of hills and discovered under several sedimentary layers what appeared to be human remains. The Alaskan mound was in fact a graveyard of gigantic human remains, consisting of crania and long leg bones. The crania measured from 22 to 24 inches from base to crown. Since an adult skull normally measures about eight inches from back to front, such a large crania would imply an immense size for a normally proportioned human. Furthermore, every skull was said to have been neatly trepanned (a process of cutting a hole in the upper portion of the skull).

In fact, the habit of flattening the skull of an infant and forcing it to grow in an elongated shape was a practice used by ancient Peruvians, the Mayas, and the Flathead Indians of Montana. Sanderson tried to gather further proof, eventually receiving a letter from another member of the unit who confirmed the report. The letters both indicated that the Smithsonian Institution had collected the remains, yet nothing else was heard. Sanderson seemed convinced that the Smithsonian Institution had received the bizarre relics, but wondered why they would not release the data. He asks, "" ...is it that these people cannot face rewriting all the textbooks?""

## **GIANT FOOTPRINTS:**

In South Africa, a giant footprint of a woman measuring over 4 feet long has been carbon dated at approximately 9 million years old. Pointing to the probability of this being a female human-like species' foot, proportionally the two-legged being would need to be some 30 feet tall! The local African people commonly refer to this as a highly revered and sacred site. Giants, twice the size of gorillas, were found in Java.

The petrified remains of a giant were found in South Africa. A well-known anthropologist declared that these remains showed that these man's ancestors must have been giants.

## **GIANT DEVILS:**

Within an ancient burial mound near the town of Sayre in Bradford County, Pennsylvania, skeletons measuring approximately 7 feet in length were discovered in the 1800s. But the most remarkable feature of these tall skeletons was not their height, but the strange horn-like protrusions above the brow region on their skulls. It was estimated that they were buried around 1200 AD. According to some sources, the skeletons were sent to the "American Investigating Museum" in Philadelphia, and vanished.

## **REVISED ARTICLES:**

In Lampec-Rancho California, in 1833, soldiers discovered a skeleton 11' 9" long which was covered with boulders with an unidentified writing. A similar writing was unearthed on the

isle of Santa Maria off the cost of Los Angeles. In July of 1887 in Eureka Nevada, a human leg was found measuring 38.9 inches from the knee to the heel. The man was over 11 foot tall. In Crittendon Arizona in 1891 a sarcophagus was uncovered containing a human 3 meters high and had 12 toes. More recently skeletons ranging from 2.8 meters to 3.12 meters were found by soviets in the Caucasus Mountains. In China skeletons 10 feet tall have been found. In the Philippines a giant human skeleton was found at gargation, Measuring 17 feet long. In the Eagle three Cole mine at Bear Creek Montana in 1920 two human molars were found three times larger than normal. In Braton Tennessee human footprints were found in solid rock 33 inches long and one foot wide. These also have six toes each.

Tools found in Morocco are so large their users must have been at least 12 foot tall. Other Giants found around the world are: the Java giant, the south China giant, and the South Africa giant. (See The Timeless Earth p. 26)

In 1833,soldiers digging a pit for a powder magazine at Lompock Rancho, California, hacked their way through a layer of cemented gravel and came up with the skeleton of a giant man about twelve feet tall. The skeleton was surrounded by carved shells, huge stone axes, and blocks of porphyry covered with unintelligible symbols. The giant was also noteworthy in still another respect :He had a double row of teeth, both upper and lower. When the natives began to attach some religious significance to the find, authorities ordered the skeleton and all the artifacts secretly reburied- and, of course, lost to the scientific study they deserved.

This particular giant, incidentally, bore marked similarity to another, that of a giant man with double rows of teeth whose skeletal remains were dug up on Santa Rosa Island, off the California coast. Subsequent research has shown that he, or his descendants, feasted on the small elephants which once lived on that island and which have vanished like the giants who ate them, countless ages ago.

Near Crittenden, Arizona, in 1891, workmen excavating for a commercial building came upon a huge stone sarcophagus eight feet below the surface. The contractor called in expert help, and the sarcophagus was opened to reveal a granite mummy case which had once held the body of a human being more than twelve feet tall -a human with six toes, according to the carving of the case. But the body had been buried so many thousands of years that it had long since turned to dust. Just another silent witness to the truth of Genesis, which tells us that there were giants in the earth in those days, the excavation of over a dozen skeletons 8 to 12 feet tall, around the world, shocked archeologists.

These skeletons were positively human. Some of these skeletal remains are on Maui in lava caves near Ulupalakua and Olowalu. An example of this is the "mysterious" disappearance of more than 50 perfectly kept gigantic antediluvian skeletons (between 10-14 feet tall) found in a cave in Arizona.

Earth Giants : over the years a number of gigantic human skeletons have been unearthed. The most distinctive of these were the remains of some American giants found in the 1880s

**at Tioga Point, near Sayre in Bradford County, Pennsylvania, as recounted by Robert Lyman in Forbidden Land. Some other examples include the following:**

**A decayed human skeleton claimed by eyewitnesses to measure around 3.28 metres (10 feet 9 inches tall), was unearthed by labourers while ploughing a vineyard in November 1856 in East Wheeling, now in West Virginia.**

**A human skeleton measuring 3.6 metres (12 foot) tall was unearthed at Lompock Rancho, California, in 1833 by soldiers digging in a pit for a powder magazine. The specimen had a double row of teeth and was surrounded by numerous stone axes, carved shells and porphyry blocks with abstruse symbols associated with it.**

**Several mummified remains of red haired humans ranging from 2-2.5 metres (6.5 feet to over 8 feet) tall were dug up at Lovelock Cave, (70 miles) north-east of Reno, Nevada, by a guano mining operation. These bones substantiated legends by the local Piute Indians regarding giants which they called Si-Te-Cahs. For some reason scientists did not seem to want to investigate these finds further so many of the bones were lost. Fortunately one of the giant Lovelock skulls is still preserved today. It measures almost 30cm (1 foot) tall and resides along with other various Lovelock artifacts in the Humboldt Museum in Winnemucca, Nevada. Some of these artifacts can also be found in the Nevada State Historical Society's museum at Reno.**

Cascade Tunnels With Ancient Giant Beings

“According to Fortean researcher Pippa Braybrook, bones of strange giant beings were uncovered in 1904 by J.C. Brown in the slopes of the Cascade Mountains. These Mountains run from Northern California to British Columbia,. The bones were uncovered in an ancient tunnel cut into solid rock, “lined with tempered copper and hung with shields and wall pieces made of gold.” Other rooms deeper in the tunnel contained similar objects, some carved with drawings and hieroglyphics.

We are told that Brown left this treasure go unclaimed for 30 years. In 1934 he attempted to recover these ancient works. Friends claim that when they last saw him he was ascending into this area with supplies enough to last him for a month. He was never seen again.” (Subterranean Worlds p. 70, By Timothy Green Beckley, 1992, Inner Light Publicationa Box 753 New Bunswick, N.J. )

#### **THE HUBBARD DISCOVERY:**

**In this magazine for September, 1923, we mentioned a reported discovery by Mr. Samuel Hubbard, of remains of giants in the Grand Canyon of Arizona. Owing to press unreliability, we did not notice this to a great extent. We have now, however, obtained more knowledge on the subject, and there remains no doubt that Mr. Hubbard has actually made a discovery composed of the following parts:**

**(a) Petrified bodies of two human beings about 18 and 15 feet in height respectively. One of these is buried under a recent rock fall which would require several days' work to remove; the other, of which Mr. Hubbard took photographs, is in a crevice of difficult accessibility. The bodies are formed of a limestone petrification embedded in sandstone.**

**(b) An ancient beach, now sandstone, containing a great number of footprints of a giant**

race, men, women and children; the prints of adults about 17 to 20 inches in length, and corresponding in size and shape to the Carson City and Blue Ridge prints.

#### **EVEN MORE GIANT RECORDS:**

According to a press clipping, dated Nayarit, Mexico, May 14, 1926, Capts. D. W. Page and F. W. Devalda discovered the bones of a race of giants who averaged over ten feet in height. Local legends state that they came from Ecuador. Nothing more has been heard of this, but that is not surprising; the word "giant" will flutter the feathers of any scientist into rapid flight, metaphorically speaking, in the opposite direction. So also with a report from the Washington Post, June 22, 1925, and the New York Herald-Tribune, June 21, 1925. A mining party, it is reported, found skeletons measuring 10 to 12 feet, with feet 18 to 20 inches long, near Sisoguiche, Mexico. The Los Angeles Times, October 2, 1927, says that explorers in Mexico located large human bones near Tapextla, indicating a race of "gigantic size." All this, if unfounded, would be straining coincidence or imagination pretty far.

Press accounts say that the skeleton of a gigantic man, with head missing, has been unearthed at El Boquin, on the Mico River, in the Chontales district. The ribs are a yard long and four inches wide and the shin bone is too heavy for one man to carry. "Chontales" is an Indian word, meaning "wild men."

In the late 1950's during road construction in Homs southeast Turkey, many tombs of Giants were indeed unearthed. These tombs were 4 meters long, and when entered in 2 cases the human thigh bones were measured to be 47.24 inches in length. They calculated that the person who owned this Femur probably stood at fourteen to sixteen feet tall. A cast of this bone is seen at the Creationist museum in Texas.

Flavius Josephus, the noted Jewish historian of the first century A.D., described the giants as having "bodies so large and countenances so entirely different from other men that they were surprising to the sight and terrible to the hearing." And he adds that in his day, the bones of the giants were still on display!

## **Giant Human Remains**

**- From records and sources all over the world. -submitted by John Williams**

#### **Giant Skeletons:**

**In his book, The Natural and Aboriginal History of Tennessee, author John Haywood describes "very large" bones in stone graves found in Williamson County, Tennessee, in 1821. In White County, Tennessee, an "ancient fortification" contained skeletons of gigantic stature averaging at least 7 feet in length.**

Giant skeletons were found in the mid-1800s near Rutland and Rodman, New York. J.N. DeHart, M.D. found vertebrae "larger than those of the present type" in Wisconsin mounds in 1876. W.H.R. Lykins uncovered skull bones "of great size and thickness" in mounds of Kansas City area in 1877.

George W. Hill, M.D., dug out a skeleton "of unusual size" in a mound of Ashland County, Ohio. In 1879, a nine-foot, eight-inch skeleton was excavated from a mound near Brewersville, Indiana (Indianapolis News, Nov 10, 1975).

A six foot, six inch skeleton was found in a Utah mound. This was at least a foot taller than the average Indian height in the area, and these natives-what few there were of them -were not mound builders.

"A skeleton which is reported to have been of enormous dimensions" was found in a clay coffin, with a sandstone slab containing hieroglyphics, during mound explorations by a Dr Everhart near Zanesville, Ohio. (American Antiquarian, v3, 1880, pg61).

Ten skeletons "of both sexes and of gigantic size" were taken from a mound at Warren, Minnesota, 1883. (St. Paul Pioneer Press, May 23, 1883) A skeleton 7 feet 6 inches long was found in a massive stone structure that was likened to a temple chamber within a mound in Kanawha County, West Virginia, in 1884. (American Antiquarian, v6, 1884 133f. Cyrus Thomas, Report on Mound Explorations of the Bureau of Ethnology, 12th Annual Report, Smithsonian Bureau of Ethnology, 1890-91).

A large mound near Gasterville, Pennsylvania, contained a vault in which was found a skeleton measuring 7 feet 2 inches. Inscriptions were carved on the vault. (American Antiquarian, v7, 1885, 52f).

In 1885, miners discovered the mummified remains of woman measuring 6 feet 8 inches tall holding an infant. The mummies were found in a cave behind a wall of rock in the Yosemite Valley.

**In Minnesota, 1888, were discovered remains of seven skeletons 7 to 8 feet tall. (St. Paul Pioneer Press, June 29, 1888).**

**A mound near Toledo, Ohio, held 20 skeletons, seated and facing east with jaws and teeth "twice as large as those of present day people," and besides each was a large bowl with "curiously wrought hieroglyphic figures." (Chicago Record, Oct. 24, 1895; cited by Ron G. Dobbins, NEARA Journal, v13, fall 1978).**

**The skeleton of a huge man was uncovered at the Beckley farm, Lake Koronis, Minnesota; while at Moose Island and Pine City, bones of other giants came to light. (St. Paul Globe, Aug. 12, 1896).**

**In 1911, several red-haired mummies ranging from 6 and a half feet to 8 feet tall were discovered in a cave in Lovelock, Nevada. In February and June of 1931, large skeletons were found in the Humboldt lake bed near Lovelock, Nevada. The first of these two skeletons found measured 8 1/2 feet tall and appeared to have been wrapped in a gum-covered fabric similiar to the Egyptian manner. The second skeleton was almost 10 feet long. (Review - Miner, June 19, 1931).**

**A 7 foot 7 inch skeleton was reported to have been found on the Friedman ranch, near Lovelock, Nevada, in 1939.(Review - Miner, Sept. 29, 1939) In 1965, a skeleton measuring 8 feet 9 inches was found buried under a rock ledge along the Holly Creek in east-central Kentucky.**

### **AUSTRALIAN GIANTS:**

**There was a race or group of people found in Australia called "meganthropus" by anthropologists. These people were of very large size--estimated between 7 to 12 feet tall, depending on what source you read. These people were found with mega tool artifacts, so their humanness is difficult to question. Four jaw fragments and thousands of teeth have been found in China of "gigantopithecus blacki"--named after the discover. Based on the size of the teeth and deep jaws, its size has been estimated at around 10 feet and as tall as 12 feet, 1200 pounds.**

## **PROOF OF AUSTRALIAN GIANTS:**

**In old river gravels near Bathurst, NSW, huge stone artifacts -- clubs, pounders, adzes, chisels, knives and hand axes -- all of tremendous weight, lie scattered over a wide area. These weigh anything from 8, 10, 15, to 21 and 25 pounds, implements which only men of tremendous proportions could possibly have made and used. Estimates for the actual size of these men range from 10 to 12 feet tall and over, weighing from 500 to 600 lbs. A fossicker searching the Winburndale River north of Bathurst discovered a large quartzitised fossil human molar tooth, far too big for any normal modern man. A similar find was made near Dubbo, N.S.W.**

**Prospectors working in the Bathurst district in the 1930's frequently reported coming across numerous large human footprints fossilised in shoals of red jasper.**

**Even more impressive were fossil deposits found by naturalist Rex Gilroy around Bathurst. He excavated from a depth of 6 feet (2 m) below the surface a fossil lower back molar tooth measuring 67 mm. in length by 50mm. x 42 mm. across the crown. If his measurements are correct, the owner would have been at least 25 ft. tall, weighing well over 1,000 lbs!**

**At Gympie, Queensland, a farmer, Keith Walker, was ploughing his field when he turned up the large fragment of the back portion of a jaw which still possessed the hollow for a missing lower back molar tooth. This is now in Rex Gilroy's possession. The owner of the tooth would have stood at 10 feet tall.**

**In the Megalong Valley in the Blue Mountains NSW, a Mr P. Holman found in ironstone protruding from a creek bank the deeply impressed print of a large human-like foot. The print was that of the instep, with all 5 toes clearly shown. This footprint measures 7 inches across the toes. Had the footprint been complete it would have been at least 2 feet (60 cm in length, appropriate to a 12 foot human. However, the largest footprint found on the Blue Mountains must have belonged to a man 20 feet tall!**

**A set of 3 huge footprints was discovered near Mulgoa, south of Penrith, N.S.W. These prints, each measuring 2 ft long and 7 inches across the toes,**

are 6 ft. apart, indicating the stride of the 12 ft. giant who left them. These prints were preserved by volcanic lava and ash flows which "occurred millions of years" before man is supposed to have appeared on the Australian continent (if one is to believe the evolutionary theory): Noel Reeves found monstrous footprints near Kempsey, N.S.W. in sandstone beds on the Upper Macleay River. One print shows toe 4 inches (10cm) long and the total toe-span is 10 inches (25cm) - suggesting that the owner of the print may have been 17 feet tall.

It is certain the Aborigines were not the first to reach Australia. Anthropologists maintain mainland Aborigines are in fact quite recent arrivals that ate their predecessors who were akin to the New Guinea natives. Aborigine themselves admit in their ancient folklore that this land was inhabited by several groups of men, as well as giants, before they settled here.

#### **MORE GIANT RECORDS:**

In an old book entitled "History And Antiquities Of Allerdale," there is an account of a giant found in Cumberland, England, at an unknown date in the middle ages. Called "A True Report of Hugh Hodson, of Thorneway," it states: "The said gyant was buried four yards deep in the ground, which is now a corn field. He was four yards and a half long, and was in complete armor; his sword and battle-axe lying by him....his teeth were six inches long, and two inches broad..." The bones of a twelve foot tall man were dug up in 1833 by a group of soldiers at Lompock Rancho, California. The skeleton was surrounded by giant weapons, and the skull featured a double row of teeth. Yet another giant was unearthed in 1891, when workmen in Crittenden, Arizona excavated a huge stone coffin that had evidently once held the body of a man 12 feet tall. A carving on the granite case indicated that he had six toes.

A living giant was sighted in the little village of Buffalo Mills, Pennsylvania, on August 19, 1973. A man at least nine feet tall strode down the main street of the village, dressed in strange clothing, which appeared to be made of some sort of shimmering material. He gazed at the startled townspeople in a dark, penetrating way and then loped off casually into oblivion.



## **OTHER GIANT EVIDENCES:**

**In July, 1877, four prospectors were looking for gold and silver outcroppings in a desolate, hilly area near the head of Spring Valley, not far from Eureka, Nevada.**

**Scanning the rocks, one of the men spotted something peculiar projecting from a high ledge. Climbing up to get a better look, the prospector was surprised to find a human leg bone and knee cap sticking out of solid rock. He called to his companions, and together they dislodged the oddity with picks. Realizing they had a most unusual find, the men brought it into Eureka, where it was placed on display.**

**The stone in which the bones were embedded was a hard, dark red quartzite, and the bones themselves were almost black with carbonization - indicative of great age. When the surrounding stone was carefully chipped away, the specimen was found to be composed of a leg bone broken off four inches above the knee, the knee cap and joint, the lower leg bones, and the complete bones of the foot. Several medical doctors examined the remains, and were convinced that anatomically they had indeed once belonged to a human being, and a very modern-looking one.**

**But an intriguing aspect of the bones was their size: from knee to heel they measured 39 inches. Their owner in life had thus stood over 12 feet tall. Compounding the mystery further was the fact that the rock in which the bones were found was dated geologically to the era of the dinosaurs, the Jurassic - over 185 million years old. The local papers ran several stories on the marvelous find, and two museums sent investigators to see if any more of the skeleton could be located. Unfortunately, nothing else but the leg and foot existed in the rock." Strange Relics from the Depths of the Earth--Jochmans <http://www.ior.com/~kjc/pages/strange.htm>**

## **EVEN MORE RECORDS OF GIANTS:**

**In 1936 Larson Kohl, the German paleontologist and anthropologist, found the bones of gigantic men on the shore of Lake Elyasi in Central Africa. Other giant skeletons were later found in Hava, the Transvaal and China. The evidence for the existence of giants is incontrovertible. "A**

scientifically assured fact," says Dr. Louis Burkhalter.

- 1. Large bones in stone graves in Williamson County and White County, Tennessee. Discovered in the early 1800s, the average stature of these giants was 7 feet tall.**
- 2. Giant skeletons found in the mid-1800s in New York state near Rutland and Rodman.**
- 3. In 1833, soldiers digging at Lompock Rancho, California, discovered a male skeleton 12 feet tall. The skeleton was surrounded by caved shells, stone axes, other artifacts. The skeleton had double rows of upper and lower teeth. Unfortunately, this body was secretly buried because the local Indians became upset about the remains.**
- 4. A giant skull and vertebrae found in Wisconsin and Kansas City.**
- 5. A giant found off the California Coast on Santa Rosa Island in the 1800s was distinguished by its double rows of teeth.**
- 6. A 9-foot, 8-inch skeleton was excavated from a mound near Brewersville, Indiana, in 1879.**
- 7. Skeletons of "enormous dimensions" were found in mounds near Zanesville, Ohio, and Warren, Minnesota, in the 1880s.**
- 8. In Clearwater Minnesota, the skeletons of seven giants were found in mounds. These had receding foreheads and complete double dentition.**
- 9. At Le Crescent, Wisconsin, mounds were found to contain giant bones. Five miles north near Dresbach, the bones of people over 8 feet tall were found.**
- 10. In 1888 seven skeletons ranging from seven to 8 feet tall were discovered.**
- 11. Near Toledo, Ohio, 20 skeletons were discovered with jaws and teeth "twice as large as those of present day people." The account also noted that odd hieroglyphics were found with the bodies.**
- 12. Miners in Lovelock Cave, California, discovered a very tall, red-haired mummy In 1911**
- 13. This mummy eventually went to a fraternal lodge where it was used for "initiation purposes."**
- 14. In 1931, skeletons from 8 ½ to 10 feet long were found in the Humbolt lake bed in California.**
- 15. In 1932, Ellis Wright found human tracks in the gypsum rock at White Sands, New Mexico. His discovery was later backed up by Fred Arthur, Supervisor of the Lincoln National Park and others who reported that each footprint was 22 inches long and from 8 to 10 inches wide. They were certain the prints were human in origin due to the outline of the perfect prints coupled with a readily apparent instep.**

16. During World War II, author Ivan T. Sanderson tells of how his crew was bulldozing through sedimentary rock when it stumbled upon what appeared to be a graveyard. In it were crania that measured from 22 to 24 inches from base to crown nearly three times as large as an adult human skull. Had the creatures to whom these skulls belonged been properly proportioned, they undoubtedly would have been at least 12 feet tall or taller.

17. In 1947 a local newspaper reported the discovery of nine-foot-tall skeletons by amateur archeologists working in Death Valley.

18. The archeologists involved also claimed to have found what appeared to be the bones of tigers and dinosaurs with the human remains.

19. The Catalina Islands, off California, are the home of dwarf mammoth bones that were once roasted in ancient fire pits. These were roasted and eaten by human-like creatures who were giants with double rows of teeth.

### **THE KOSSUTH GIANTS:**

**Kossuth:** October was a month of some excitement in scientific circles as seven strange and gigantic mummies were discovered just outside of Kossuth Center. Marvin Rainwater, a local farmer, had been digging a new well on his property and struck a deposit of very hard stone about nine feet below the topsoil. In attempting to dig it out, he found that it was more than four feet wide in every direction. Removing it would be a terrific chore. He considered the possibility that this was a layer of bedrock, but that would certainly be odd that close to the surface. Further, being somewhat familiar with geologic deposits, he knew that the stone was not the familiar limestone for which such Eastern Iowa areas like Stone City are famous. This

was something else entirely. Upon close inspection Rainwater also saw that the stone was not as rough as might be expected in a natural formation, but was in fact smooth and polished. Now very curious as to the nature of the find, he called several friends from surrounding farms and they began an excavation. They discovered that it was not a single stone, but rather one of at least several irregularly cut slabs stretching out over a wide area, yet fitted so tightly together that not even a knife blade could be put between them. Each slab measured roughly 8'x10', and when struck with a sledge seemed to ring with a hollowness that might indicate this was not a floor but the outside portion of a ceiling. Rainwater wondered if he had not stumbled upon some sort of buried stone structure on his property.

Believing that there might be a way to parlay living other than farming if he played his cards right, Mr. Rainwater contacted Georg Von Podebrad

College, who in turn dispatched a team of archeologists, anthropologists, and geologists to the site. The researchers were delighted with the anomalies presented them.

Firstly, the stone was not at all native to Iowa, but was in fact basalt—a hard, dense volcanic rock composed of plagioclase, augite, and magnetite. The type of stone used by the Egyptians to build their massive monuments. The depth of the slabs indicated that they had been there for a very long time, predating the advent of the kind of modern transportation and heavy machinery needed to bring such a large quantity of foreign stone to Iowa, and quite probably the slabs had been laid down before the last glacial age.

It is impossible to gauge with any certainty just how long they had been there. After the soil covering the slabs had been entirely removed, the area covered by the stones was a perfect square measuring 188 feet on each side. Digging around the perimeter revealed that Rainwater had been correct, the structure did go deeper into the ground. The cyclopean structure was revealed to be a pyramid similar in shape to one located at Marietta, Ohio, although those mounds and monuments erected by the prehistoric Indians were made of sun-dried brick mixed with rushes. This technique, too, is curiously similar to the Egyptian technique of brick-making with straw and mud. It took many months, but the entire structure was finally exposed, and on the eastern side was found a massive filled-in archway with strong resemblance to those of ancient Greece. At the bottom of the arch was a smaller arch, measuring only 6' to the capstone. This too had been filled in and blocked off. With genuine awe and some hesitancy the scientists of the Rainwater Site began the work of opening the smaller entryway, wondering what light from the first torch penetrated the gloom of the ancient structure, Albert Grosslockner gasped at what he thought were seven huge and exquisitely detailed statues seated in a ring around a very large and deep fire pit. Moving closer, he realized that the figures were not carved of stone, but were in fact the mummified remains of some giant humanoid race.

Could what they found be in fact a prehistoric burial vault for some pre-human creatures or was it a prison designed to hold some freakish aberration of nature? The figures, were each fully ten feet tall even when measured seated in their cross-legged positions. They all faced into the circle with arms folded across their legs. Upon close examination it was seen that they had double rows of teeth in their upper and lower jaws. The foreheads were unusually low and sloping, with exceedingly prominent

brows. The skin of the mysterious giants was wrinkled and tough, as though tanned, and the hair of each of them was distinctly red in color. Their faces, still very expressive even in death, taunted the scientists with their silence. Who, or what, were these creatures, how had they come to be locked in this stone room, and where had the stone itself come from originally? After careful excavation of the site, the bodies were removed for x-ray and autopsy examination. The excitement over the find was far in excess of the "Gypsum Man" find in Iowa so many years before-a hoax from which the Putnam Museum of Davenport had never fully recovered from. These giants were very real. The medical examinations demonstrated that there was definite skeletal structure, that they were organic creatures who had once been very much alive.

One explanation for the mummies might lie in the legends of the Paiute Indians who tell of a race of red-haired giants who were their mortal enemies centuries ago. They were called the Si-Te-Cahs, driven from Nevada by a previously unheard of alliance of tribes. Did the Si-Te-Cahs retreat from the west to Iowa? Was the stone structure here before and simply co-opted by the giants? No one may ever know, however it is interesting to note that among the Indian relics held in the Kossuth County chapter of the State Historical Society are three robes made entirely from very long strands of red hair. We await DNA comparisons of samples taken from the mummies and the robes to determine a connection. In the mean-time, Marvin Rainwater has had his farm purchased by interested parties in Hopkins Grove for an undisclosed sum, and is quite happily no longer toiling in his fields or digging wells.

#### **GIANT SKULLS FOUND:**

Ivan T. Sanderson, a well-known zoologist and frequent guest on Johnny Carson's TONIGHT SHOW in the 1960s (usually with an exotic animal with a pangolin or a lemur), once related a curious story about a letter he received regarding an engineer who was stationed on the Aleutian island of Shemya during World War II. While building an airstrip, his crew bulldozed a group of hills and discovered under several sedimentary layers what appeared to be human remains. The Alaskan mound was in fact a graveyard of gigantic human remains, consisting of crania and long leg bones. The crania measured from 22 to 24 inches from base to crown. Since an adult skull normally measures about eight inches from back to front, such a large crania would

imply an immense size for a normally proportioned human. Furthermore, every skull was said to have been neatly trepanned (a process of cutting a hole in the upper portion of the skull).

In fact, the habit of flattening the skull of an infant and forcing it to grow in an elongated shape was a practice used by ancient Peruvians, the Mayas, and the Flathead Indians of Montana. Sanderson tried to gather further proof, eventually receiving a letter from another member of the unit who confirmed the report. The letters both indicated that the Smithsonian Institution had collected the remains, yet nothing else was heard. Sanderson seemed convinced that the Smithsonian Institution had received the bizarre relics, but wondered why they would not release the data. He asks, ""...is it that these people cannot face rewriting all the textbooks?""

#### **GIANT FOOTPRINTS:**

In South Africa, a giant footprint of a woman measuring over 4 feet long has been carbon dated at approximately 9 million years old. Pointing to the probability of this being a female human-like species' foot, proportionally the two-legged being would need to be some 30 feet tall! The local African people commonly refer to this as a highly revered and sacred site. Giants, twice the size of gorillas, were found in Java.

The petrified remains of a giant were found in South Africa. A well-known anthropologist declared that these remains showed that these man's ancestors must have been giants.

#### **GIANT DEVILS:**

Within an ancient burial mound near the town of Sayre in Bradford County, Pennsylvania, skeletons measuring approximately 7 feet in length were discovered in the 1800s. But the most remarkable feature of these tall skeletons was not their height, but the strange horn-like protrusions above the brow region on their skulls. It was estimated that they were buried around 1200 AD. According to some sources, the skeletons were sent to the "American Investigating Museum" in Philadelphia, and vanished.

#### **REVISED ARTICLES:**

**In Lampec-Rancho California, in 1833, soldiers discovered a skeleton 11' 9" long which was covered with boulders with an unidentified writing. A similar writing was unearthed on the isle of Santa Maria off the cost of Los Angeles. In July of 1887 in Eureka Nevada, a human leg was found measuring 38.9 inches from the knee to the heel. The man was over 11 foot tall. In Crittenton Arizona in 1891 a sarcophagus was uncovered containing a human 3 meters high and had 12 toes. More recently skeletons ranging from 2.8 meters to 3.12 meters were found by soviets in the Caucasus Mountains. In China skeletons 10 feet tall have been found. In the Philippines a giant human skeleton was found at gargation, Measuring 17 feet long. In the Eagle three Cole mine at Bear Creek Montana in 1920 two human molars were found three times larger than normal. In Braton Tennessee human footprints were found in solid rock 33 inches log and one foot wide. These also have six toes each.**

**Tools found in Morocco are so large their users must have been at least 12 foot tall. Other Giants found around the world are: the Java giant, the south China giant, and the South Africa giant. (See The Timeless Earth p. 26)**

**In 1833,soldiers digging a pit for a powder magazine at Lompock Rancho, California, hacked their way through a layer of cemented gravel and came up with the skeleton of a giant man about twelve feet tall. The skeleton was surrounded by carved shells, huge stone axes, and blocks of porphyry covered with unintelligible symbols. The giant was also noteworthy in still another respect :He had a double row of teeth, both upper and lower. When the natives began to attach some religious significance to the find, authorities ordered the skeleton and all the artifacts secretly reburied- and, of course, lost to the scientific study they deserved.**

**This particular giant, incidentally, bore marked similarity to another, that of a giant man with double rows of teeth whose skeletal remains were dug up on Santa Rosa Island, off the California coast. Subsequent research has shown that he, or his descendants, feasted on the small elephants which once lived on that island and which have vanished like the giants who ate them, countless ages ago.**

**Near Crittenden, Arizona, in 1891, workmen excavating for a commercial building came upon a huge stone sarcophagus eight feet below the surface. The contractor called in expert help, and the sarcophagus was opened to reveal a granite mummy case which had once held the body of a human being more than twelve feet tall -a human with six toes, according to the carving of the case. But the body had been buried so many thousands of years that it had long since turned to dust. Just another silent witness to the truth of Genesis, which tells us that there were giants in the earth in those days, the excavation of over a dozen skeletons 8 to 12 feet tall, around the world, shocked archeologists.**

**These skeletons were positively human. Some of these skeletal remains are on Maui in lava caves near Ulupalakua and Olowalu. An example of this is the "mysterious" disappearance of more than 50 perfectly kept gigantic antediluvian skeletons (between 10-14 feet tall) found in a cave in Arizona.**

**Earth Giants : over the years a number of gigantic human skeletons have been unearthed. The most distinctive of these were the remains of some American giants found in the 1880s at Tioga Point, near Sayre in Bradford County, Pennsylvania, as recounted by Robert Lyman in Forbidden Land. Some other examples include the following:**

**A decayed human skeleton claimed by eyewitnesses to measure around 3.28 metres (10 feet 9 inches tall), was unearthed by labourers while ploughing a vineyard in November 1856 in East Wheeling, now in West Virginia.**

**A human skeleton measuring 3.6 metres (12 foot) tall was unearthed at Lompock Rancho, California, in 1833 by soldiers digging in a pit for a powder magazine. The specimen had a double row of teeth and was surrounded by numerous stone axes, carved shells and porphyry blocks with abstruse symbols associated with it.**

**Several mummified remains of red haired humans ranging from 2-2.5 metres (6.5 feet to over 8 feet) tall were dug up at Lovelock Cave, (70 miles) north-east of Reno, Nevada, by a guano mining operation. These bones substantiated legends by the local Piute Indians regarding giants which they called Si-Te-Cahs. For some reason scientists did not seem to want to investigate these finds further so many of the bones were lost.**



Fortunately one of the giant Lovelock skulls is still preserved today. It measures almost 30cm (1 foot) tall and resides along with other various Lovelock artifacts in the Humboldt Museum in Winnemucca, Nevada. Some of these artifacts can also be found in the Nevada State Historical Society's museum at Reno.

### **THE HUBBARD DISCOVERY:**

In this magazine for September, 1923, we mentioned a reported discovery by Mr. Samuel Hubbard, of remains of giants in the Grand Canyon of Arizona. Owing to press unreliability, we did not notice this to a great extent. We have now, however, obtained more knowledge on the subject, and there remains no doubt that Mr. Hubbard has actually made a discovery composed of the following parts:

(a) Petrified bodies of two human beings about 18 and 15 feet in height respectively. One of these is buried under a recent rock fall which would require several days' work to remove; the other, of which Mr. Hubbard took photographs, is in a crevice of difficult accessibility. The bodies are formed of a limestone petrification embedded in sandstone.

(b) An ancient beach, now sandstone, containing a great number of footprints of a giant race, men, women and children; the prints of adults about 17 to 20 inches in length, and corresponding in size and shape to the Carson City and Blue Ridge prints.

### **EVEN MORE GIANT RECORDS:**

According to a press clipping, dated Nayarit, Mexico, May 14, 1926, Capts. D. W. Page and F. W. Devalda discovered the bones of a race of giants who averaged over ten feet in height. Local legends state that they came from Ecuador. Nothing more has been heard of this, but that is not surprising; the word "giant" will flutter the feathers of any scientist into rapid flight, metaphorically speaking, in the opposite direction. So also with a report from the Washington Post, June 22, 1925, and the New York Herald-Tribune, June 21, 1925. A mining party, it is reported, found skeletons measuring 10 to 12 feet, with feet 18 to 20 inches long, near Sisoguiche, Mexico. The Los Angeles Times, October 2, 1927, says that explorers in

**Mexico located large human bones near Tapextla, indicating a race of "gigantic size." All this, if unfounded, would be straining coincidence or imagination pretty far.**

**Press accounts say that the skeleton of a gigantic man, with head missing, has been unearthed at El Boquin, on the Mico River, in the Chontales district. The ribs are a yard long and four inches wide and the shin bone is too heavy for one man to carry. "Chontales" is an Indian word, meaning "wild men."**

**In the late 1950's during road construction in Homs southeast Turkey, many tombs of Giants were indeed unearthed. These tombs were 4 meters long, and when entered in 2 cases the human thigh bones were measured to be 47.24 inches in length. They calculated that the person who owned this Femur probably stood at fourteen to sixteen feet tall. A cast of this bone is seen at the Creationist museum in Texas.**

**Flavius Josephus, the noted Jewish historian of the first century A.D., described the giants as having "bodies so large and countenances so entirely different from other men that they were surprising to the sight and terrible to the hearing." And he adds that in his day, the bones of the giants were still on display!**

-----  
-----  
**NOTE: THIS INFORMATION WAS TAKEN FROM VARIOUS SOURCES**

**AND NOT EDITED IN ANY WAY.**

**-submitted by John Williams [clonejerec@hotmail.com](mailto:clonejerec@hotmail.com)**

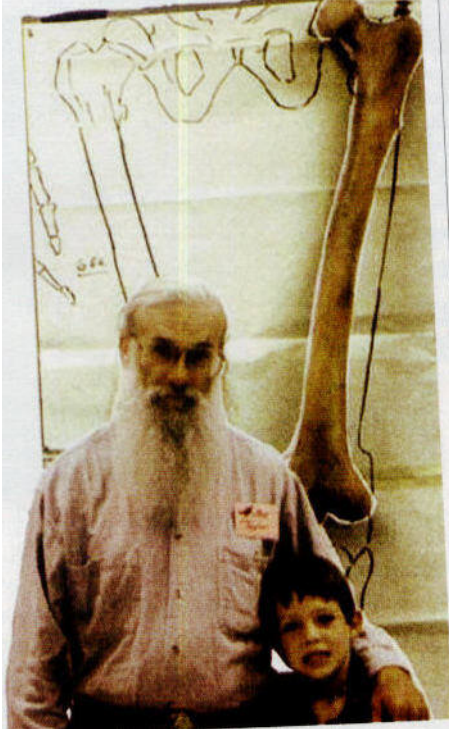
#### **Tales of Giant Skeletons Found**

j  
In the late 1950s, along the Euphrates River valley in southeastern Turkey, a *road construction* crew uncovered a tomb containing a human skeleton, measuring some *15 feet* in length. Consequently, several tombs of giants were uncovered in the area, Archeologist Joe Taylor and his grandson are seen in the photo with a sculpted copy of the femur bone above. Joe Taylor operates the *Mt. Blanco Fossil Museum*, in Crosbyton, Texas ([www.mtbianeo.com](http://www.mtbianeo.com)).

Taylor also reports on several *other* finds recorded in history. In 613, a skeleton was found near the casde of Chaumont in France, The *giant* skeleton *was* reported to be *25 feet, 6 inches*

long. In 1456, a 23-foot skeleton was found beside a river in Valence, France. In 1577, a human skeleton was found under an overturned oak tree in the Canton of Lucerne. It was reported to be 19 feet, six inches long.

But most incredible of all, is the story of two separate 36-foot human remains found by Carthaginians somewhere between 200 and 600 B.C.



Joe Taylor And Son With Display of Giant Leg Bone in his Mt Blanco Fossil Museum

### **Giant Bones in a Mound**

Professor A. B. Skinner and Professor W. X. Morehead of Phillips Andover Academy, and Dr. George Donohue, **Pennsylvania** State Historian, who have been conducting research searching the valley of the Susquehanna have uncovered an Indian mound at Tiogan Point on the upper portion of Queen Esther's Flats, on what is known as the Murray farm... In the mound uncovered were found the bones of sixty-eight men which are believed to have been buried 700 years ago. The average height of these men was twelve feet... Further evidence of their giant size was found in large celts or axes hewed from stone and buried in the grave. On some of the skulls, two inches above the perfectly formed forehead, were protuberances of bone. Members of the expedition say that it is the first discovery of its kind on record and It valuable contribution to the history of the early races. The skull and a few bones found in one grave were sent to the American Indian Museum. (*THE NEW YORK TIMES*, JULY 14, 1916)

### **THE SKELETAL REMAINS OF HUMAN GIANTS UNEARTHED**

A famous **Ohio** mound gives up the remains of human skeletons, some in good condition, while most crumbled to dust when exposed to air. Although the full dimensions of the skeletons were not given, it is stated that the skulls themselves were huge or twice the size of contemporary humans. Also, some of the stone hand implements used by this race are described as being of "extremely large size."

**INDIAN MOUND  
STRANGE AND IMPROBABLE  
SKELETONS**

At the center of one of the large **Ohio** burial mounds, excavators In 1891 found the skeleton of a massive man wrapped in copper armor. On the head was a copper cap, and copper moldings encased the jaws. The arms were clad in copper, and so were the chest and stomach. On either side of the head were wooden antlers encased in copper, and the mouth cavity was filed with immense but decayed pearls. Around the neck was a necklace of bear's teeth inlaid with pearls. Beside the skeleton of the giant lay that of a woman.

The remains were found at a depth of 14 feet in a mound 500 feet long. 200 feet wide, and 28 feet high. (NATURE, 45:157, DECEMBER 17, 1891)

**SEVEN SKELETONS FOUND**

Seven skeletons were found in a burial mound near Clearwater, **Minnesota**, in 1888. They had double rows of teeth in **the upper and** lower jaws and had been buried in a sitting position, facing the lake. The foreheads were unusually low and sloping, with prominent brows. (*THE SAINT PAUL AND MINNEAPOLIS PIONEER PRESS*, JULY 1, 1888)

**NINE FOOT SKELETON**

A skeleton nine feet eight inches tall was recovered from a stone burial mound at Brewersville, **Indiana**, in 1879. A mica necklace was around the neck, and a crude human image of burnt clay embedded with pieces of flint stood at the feet. The mound, between 3 and 5 feet high and 71 feet in diameter was excavated by Indiana archaeologists scientific observers from New York and Ohio, a local physician, Dr. Charles Green, and the owner of the property on which the mound stood, a Mr. Robison.

The bones were kept by the Robison family in a basket in a nearby grain mill. They were lost when a flood swept away the mill in 1937. (*THE INDIANAPOLIS NEWS*, NOVEMBER 10, 1975)

**MORE ON HUMAN GIANTS OF ANCIENT AMERICA**

A reporter alludes to giants being uncovered from huge animal shaped mounds located 80 miles west of Madison **Wisconsin** However the excavations are being carried on by Smithsonian archaeologists who generally are careful as to what kinds of information is released to the public. Hence, the dimensions of the giants, the likely builders of the aforesaid mounds, were not given (August 10, 1819 2:3, 4th paragraph).

Extensive study of human remains and artifacts found in mounds in Georgia and other southern states leads to an 1846 report that, in ancient America, powerful giants engaged in a number of battles. n (*THE NEW YORK TIMES*. JULY 25, 1879, 2:5,)

**SKELETONS WITH HUGE SKULLS  
UNCOVERED**

Today, 18 skeletons of a "hitherto Unknown race were found in a mound at Lake Delavan in southern **Wisconsin** The skulls of the skeletons (those which were presumed to be the males) were unusually large. The various lengths of the skeletons Uncovered were not revealed. [*THE NEW YORK TIMES* MAY 4, 1912]

**OLD SKELETON IS FOUND**

PANA, *Illinois*. June 20--

Workmen digging in a mound on a farm northwest of here unearthed today a skeleton more than six feet long, believed to be of a man of the prehistoric period buried by Indian Mound Builders. A clay pipe and a vase also were found.

(*THE NEW YORK TIMES* JUNE 21, 1924- 15:5.)

### **INDIAN GRAVES YIELD SHENANDOAH RELICS**

Flood waters near Berryville. **Virginia** unearth a 7 1/2 foot skeleton of an ancient human. Of course, when this human, to whom the bones belonged, was alive in the flesh he would have been more like 7 feet. 9 inches tall. Also, this skeleton like some others found in the same area had generally 2 to 3 times the mass as that of contemporary humans. The grave where the skeleton was found was centrally located amongst other graves, *perhaps*, testifying to the important position in society that the owner of these bones once held.

Another find, much larger than the first, was on the farm of Felix McManus, near Berryville, **Virginia** This is supposed to be an old Indian cemetery, *and* the unearthing was done by floods when the Shenandoah River was unusually high. Practically the same sort of relics were found, including a tomahawk. The graves were grouped around a center one in which the skeleton measured seven and one-half feet. (*THE NEW YORK TIMES*, JUNE 81 1924 - VIII, 2:7.)